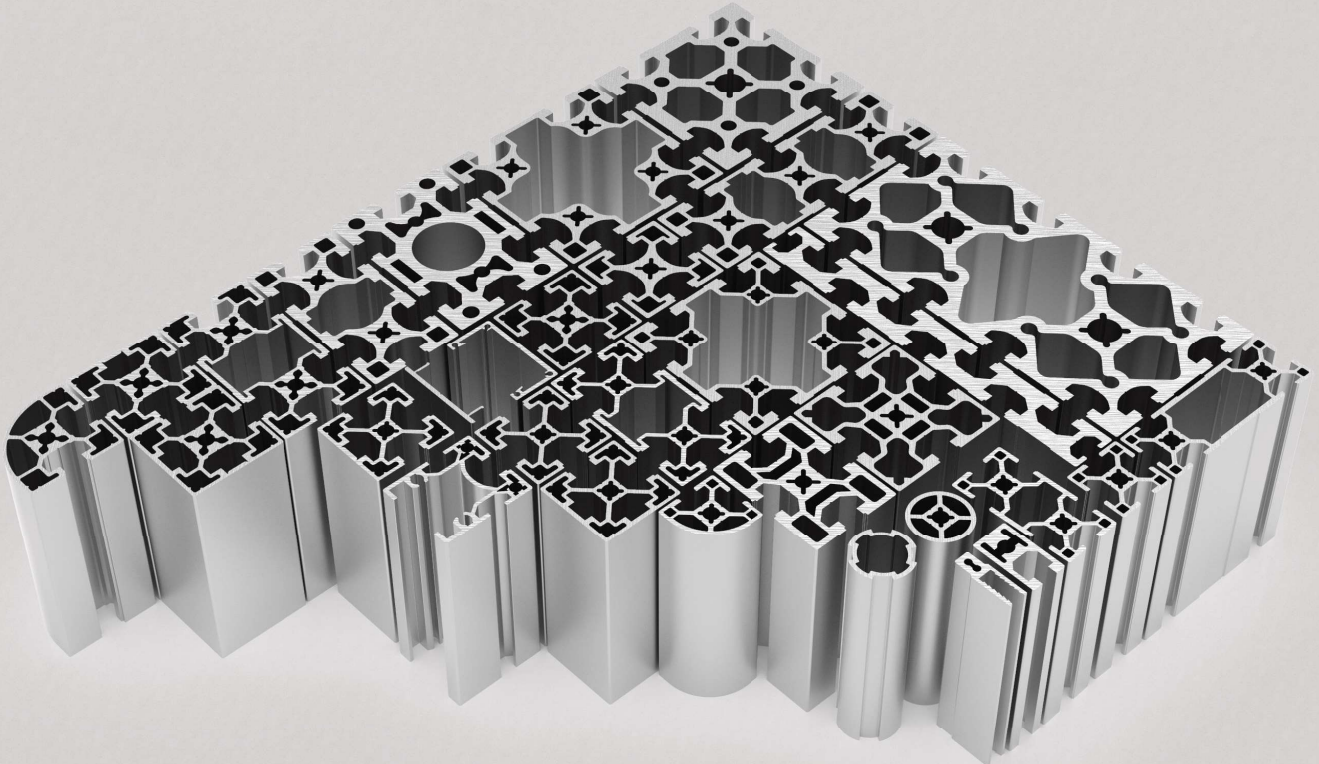
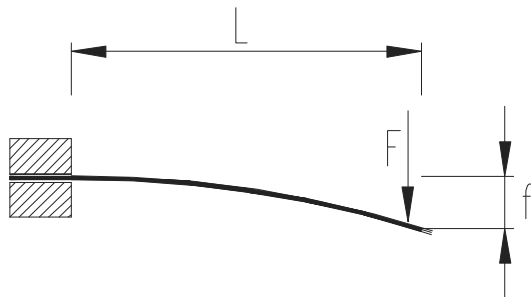


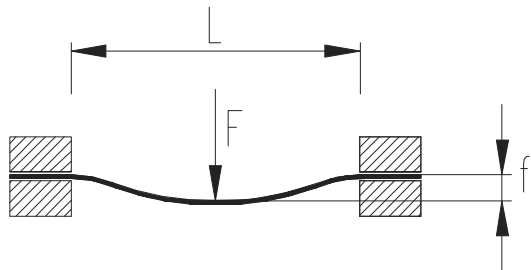
Profili
Profiles
Profili
Profile



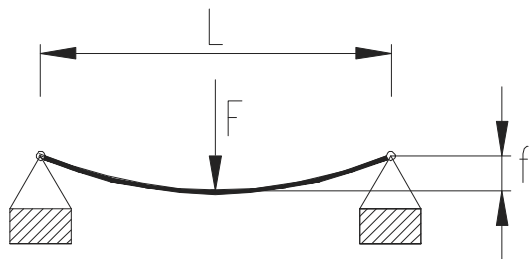
	Uporabne formule		Formule utili
	Useful formulas		Nutzbare formeln



$$\sigma = \frac{F \cdot L}{W} \leq K \quad f = \frac{F \cdot L^3}{E \cdot I \cdot 3}$$



$$\sigma = \frac{F \cdot L}{8 \cdot W} \leq K \quad f = \frac{F \cdot L^3}{E \cdot I \cdot 192}$$



$$\sigma = \frac{F \cdot L}{4 \cdot W} \leq K \quad f = \frac{F \cdot L^3}{E \cdot I \cdot 48}$$

σ [N/mm ²]	f [mm]	W [mm ³]	F [N]	I [mm ⁴]	K [N/mm ²]	E [N/mm ²]
Upogibna napetost	Poves	Odpornostni moment	Sila	Vztrajnostni moment	Max. upogibna napetost	Modul elastičnosti
Bending stress	Deflection	Section modulus	Force	Moment of inertia	Max. bending stress	Modulus of elasticity
Sforzo di flessione	Flessione	Modulo di resistenza	Forza	Momento di inerzia	Sforzo di flessione max.	Modulo di elasticita`
Biegespannung	Durchbiegung	Widerstandsmoment	Kraft	Trägheitsmoment	Max. Biegespannung	Elastizitätsmodul

$$[10^3 \text{mm}^3 = \text{cm}^3]$$

$$[10^4 \text{mm}^4 = \text{cm}^4]$$

	[N/mm ²]	[N/mm ²]	[N/mm ²]
	100	40	30
K tipični	Konstantna obremenitev	Utripna obremenitev	Izmenična obremenitev
K typical	Constant loading	Variabile loading	Swinging loading
K tipico	Costante di carico	Variabile di carico	Oscillante di carico
K typish	Dauerbelastung	Frequenzbelastung	Wechselbelastung



Tehnični podatki za modularne profile



Dati tecnici per profili modulari



Technical data for modular profiles



Technische Daten für modulare Profile

Al Mg Si EN AW-6060	Rm = 195 N/mm ²	Rp 0,2 = 145 N/mm ²
Oznaka in številka materiala po ISO standardu	Natezna trdnost	Napetost tečenja
Material designation and number according to ISO standard	Tensile strength	Yield strenght
Sigla e numero del materiale secondo ISO standard	Resistenza alla trazione	Limite elastico
Werkstoffbezeichnung und-nummer nach ISO Standard	Dehnungsfestigkeit	Elastizitätslimit

E = 70.000 N/mm ²	T5	15µm	UNI - EN 755
Modul elastičnosti	Fizično stanje	Elokacija - debelina sloja	Toleranca dimenzij
Module of elasticity	Physical status	Anodizing process - thickness	Manufacturing tolerance
Modulo di elasticità	Stato fisico	Processo d'anodizzazione - spessore	Tolleranza di fabbricazione
Elastizitätsmodul	Physischer Zustand	Eloxal-Verfahren - Schichtdicke	Fertigungstoleranz

Naziv Description Descrizione Beschreibung	Šifra Code Codice Kode	Vztrajnostni moment Moment of inertia Momento d'inerzia Trägheitsmoment I [cm ⁴]		Odpornostni moment Section modulus Modulo di resistenza Widerstandsmoment W [cm ³]		Površina Profile Area Area Profilfläche [mm ²]	Masa Weight Peso Masse [kg/m]	Utor Slot Cava Nute [mm]	Dolžina Lenght Lunghezza Profillänge [mm]
		x	y	x	y				
Al. profile for grid	10001	1,01	0,16	0,79	0,32	139,42	0,37	8/10	6050
Al. profile 18,5 x 32	10002	2,76	1,16	1,97	1,26	288,80	0,77	8	6050
Al. profile fi-28	14029	1,67	1,67	1,19	1,19	273	0,7	/	6050
Al. profile fi-28 L	14028	1,33	1,33	0,95	0,95	178	0,49	/	6050
Al. profile 30 x 30	10003	2,76	2,76	1,84	1,84	297,33	0,80	8	6050
Al. profile 30 x 30 R	10004	2,48	2,48	1,43	1,43	298,48	0,80	8	6050
Al. profile 30 x 60	10005	19,03	5,28	6,34	3,52	542,13	1,45	8	6050
Al. profile 30 x 90	10006	59,48	7,58	13,22	5,23	682,94	1,83	8	6050
Al. profile 40 x 40	10021	7,62	7,62	3,81	3,81	461,795	1,24	10	6050
Al. profile 40 x 40 C1	10026	7,65	8,39	3,82	4,02	485,3	1,31	10	6050
Al. profile 40 x 40 C2	10027	8,45	8,45	2,88	3,032	507,33	1,37	10	6050
Al. profile 40 x 45	14001	8,02	9,38	4,21	4,69	425,64	1,14	8/10	6050
Al. profile 40 x 80	10022	55,72	15,15	13,93	7,57	829,38	2,24	10	6050
Al. cover profile 45 x 25	10024	1,90	5,03	0,27	0,86	104	0,28	/	6050
Al. trunking profile 45 x 25	10025	2,08	2,87	0,14	0,25	181	0,49	/	6050
Al. profile 45 x 45 L	10007	11,46	11,46	5,10	5,10	604,85	1,63	10	6050
Al. profile 45 x 45 H	10008	15,04	15,04	6,68	6,68	792,01	2,12	10	6050
Al. profile 45 x 45 C1	10009	12,45	11,49	5,72	5,11	626,87	1,69	10	6050
Al. profile 45 x 45 C2	10028	12,52	12,52	4,09	3,98	648,89	1,75	10	6050
Al. profile 45 x 45 R	10010	9,14	9,14	3,53	3,53	516,84	1,38	10	6050
Al. profile 45 x 60	10013	36,13	21,58	12,04	9,59	1088,02	2,91	10	6050
Al. profile 45 x 90 L	10011	87,15	22,27	19,37	9,90	1059,88	2,84	10	6050
Al. profile 45 x 90 H	10012	121,05	31,15	26,90	13,84	1493,25	4,00	10	6050
Al. profile 45 x 135	10014	376,27	45,32	55,74	20,14	2125,83	5,69	10	6050
Al. Profile 60 x 60	10015	40,13	40,13	13,38	13,38	1227,13	3,29	10	6050
Al. profile 60 x 90	10016	202,42	90,32	44,98	30,11	2533,36	6,78	10	6050
Al. profile 80 x 80	10023	116,72	116,72	29,18	29,18	1461,00	3,96	10	6050
Al. profile 90 x 90 L	10017	195,39	195,39	43,42	43,42	2091,97	5,60	10	6050
Al. profile 90 x 90 H	10018	288,35	288,35	64,08	64,08	3600,61	9,64	10	6050
Al. profile 22,5 x 180	10019	897,06	11,83	66,34	10,81	2210,48	5,92	8/10	6050
Al. profile 90 x 180	10020	1889,54	510,18	209,95	113,37	5770,16	15,45	10	6050

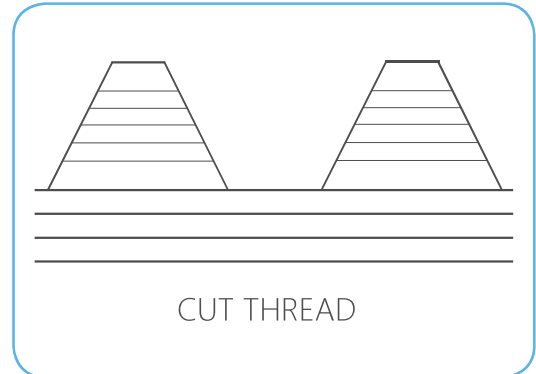
NAVOJI | THREADS | FILETTI | GEWINDE



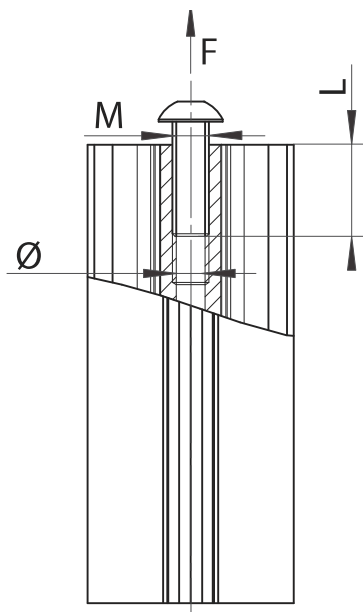
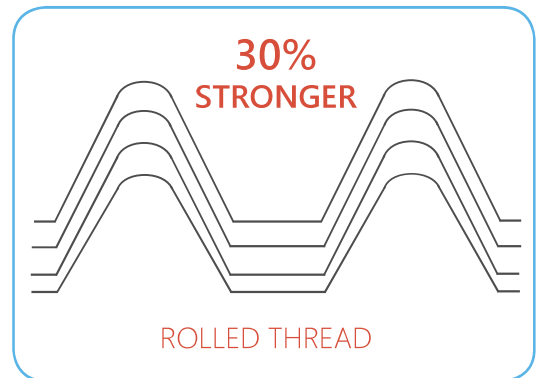
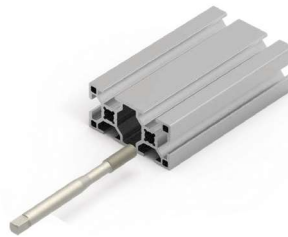
POZOR | WARNING | AVVERTENZA | VORSICHTSHINWEIS

Na al. profilih se uporablja postopek valjanja navojev in **NE** rezanja!!!
 The al. profiles have rolled and **NOT** cutted threads!!!
 Sui profili al. si utilizza il procedimento di rullatura dei filetti e **NON** tagliatura!!!
 Die Gewinde der Al.-Profile werden gerollt und **NICHT** geschnitten!!!

CUTTING TAP



FORMING TAP



Predefined hole		
M x L	Ø	F
M8x20	Ø7,4	7000 N
M10x20	Ø9,4	8000 N
M12x20	Ø11,3	10 000 N
M16x20	Ø15	12 000 N

More information about the thread

132

Kazalo Index Indice Inhalt

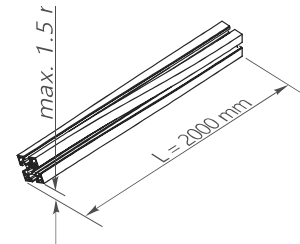
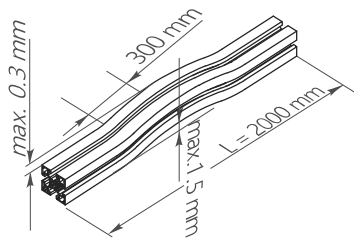
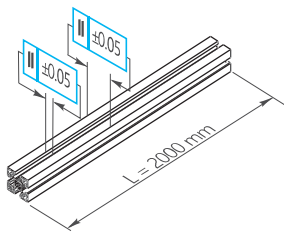
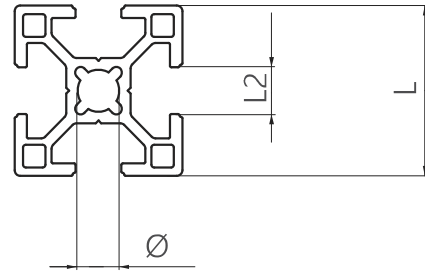
Al. profile for grid	21		28		Al. profile 45 x 45 C1
Al. profile 18,5 x 32	21		28		Al. profile 45 x 45 C2
Al. cover profile 45 x 25	22		29		Al. profile 45 x 45 R
Al. trunking profile 45 x 25	22		29		Al. profile 45 x 60
Al. profile 30 x 30	23		30		Al. profile 45 x 90 L
Al. profile 30 x 30 R	23		30		Al. profile 45 x 90 H
Al. profile 30 x 60	24		31		Al. profile 45 x 135
Al. profile 30 x 90	24		31		Al. profile 60 x 60
Al. profile 40 x 40	25		32		Al. profile 60 x 90
Al. profile 40 x 40 C1	25		32		Al. profile 80 x 80
Al. profile 40 x 40 C2	26		33		Al. profile 90 x 90 L
Al. profile 40 x 80	26		33		Al. profile 90 x 90 H
Al. profile 45 x 45 L	27		34		Al. profile 22,5 x 180
Al. profile 45 x 45 H	27		35		Al. profile 90 x 180

TOLERANCE ON DIMENSION [mm]

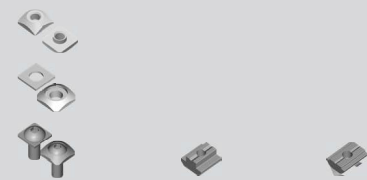
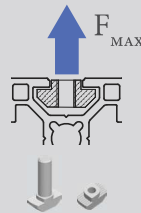
L - Dimension mm

Over Up to and including

0	30	± 0.15
30	40	±0.25
40	60	±0.40
60	80	±0.50
80	100	±0.60
100	125	±0.80
125	150	±1.0
150	180	±1.2
180	210	±1.4
L2	8,2	± 0.15
	10,2	± 0.2
∅	7.4	± 0.15
	15	± 0.2



PROFILE GROOVE LOAD CARRYING CAPACITY



		30x30, 30x30R	4 000 N	5 000 N	6 000 N	2 200 N
		30x60, 30x90				
		40x40, 40x40C1, 40x40C2, 45x45L, 45x45C1, 45x45C2, 45x45R, 40x80, 45x90L	7 000 N	10 000 N	12 000 N	9 000 N
		45x45H, 45x60, 45x90H, 45x135, 60x60, 80x80, 60x90, 90x90L, 90x90H 22,5x180, 90x180	12 000 N	15 000 N	17 000 N	13 000 N



Al. profil mreže



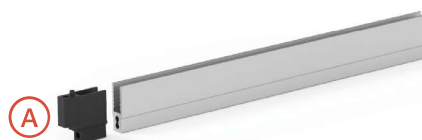
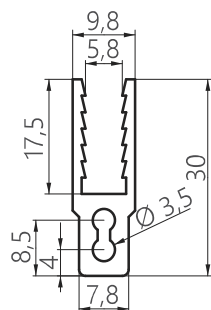
Profilo al. per griglia



Al. profile for grid



Al.-Profil für Gitter



Code

AI EI	M4	8	10	Al. profile for grid	10001
Assembly components - sold separately					Code
A	Corner connection	69	11116		



Al. profil 18,5 x 32



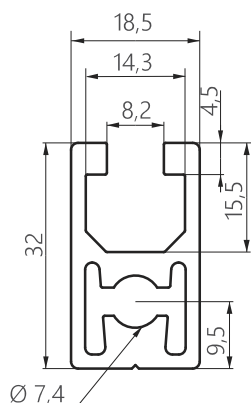
Profilo al. 18,5 x 32



Al. profile 18,5 x 32



Al.-Profil 18,5 x 32



Code

AI EI	M8	M10	8	Al. profile 18,5 x 32	10002
----------	----	-----	---	-----------------------	-------



Al. profil pokrov kanala 45 x 25 mm



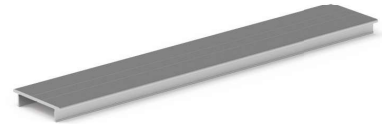
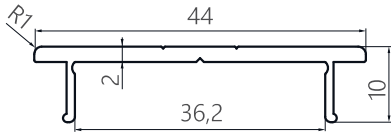
Profilo al. di copertura per profilo canale 45 x 25 mm



Al. cover profile for al. trunking profile 45 x 25 mm



Al.-Abdeckprofil für Kanalprofil 45 x 25 mm



Code



Al. cover profile for al. trunking profile 45 x 25 mm

10024



Al. profil kanala 45 x 25 mm



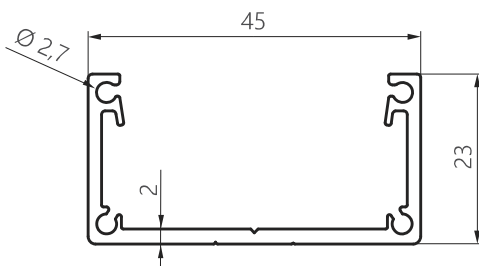
Profilo al. canale 45 x 25 mm



Al. trunking profile 45 x 25 mm



Al.-Kanalprofil 45 x 25 mm



Code



Al. trunking profile 45 x 25 mm

10025



Al. profil 30 x 30



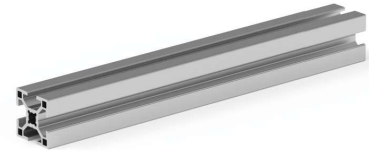
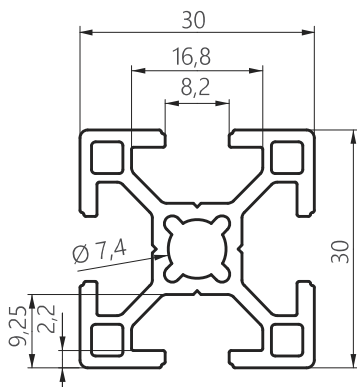
Profilo al. 30 x 30



Al. profile 30 x 30



Al.-Profil 30 x 30



Code



Al. profile 30 x 30

10003



Al. profil 30 x 30 R



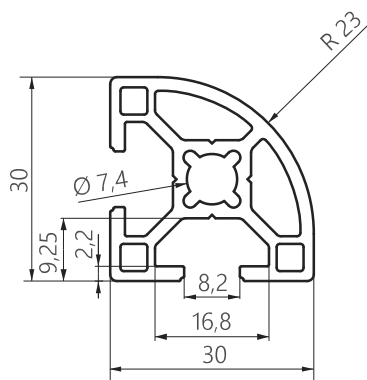
Profilo al. 30 x 30 R



Al. profile 30 x 30 R



Al.-Profil 30 x 30 R



Code



Al. profile 30 x 30 R

10004



Al. profil 30 x 60



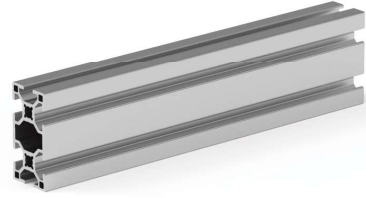
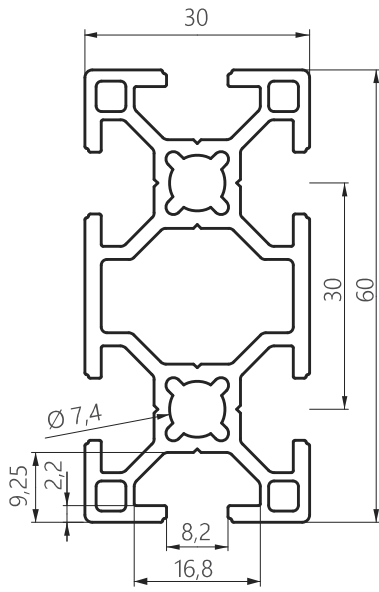
Profilo al. 30 x 60



Al. profile 30 x 60



Al.-Profil 30 x 60



Code



Al. profile 30 x 60

10005



Al. profil 30 x 90



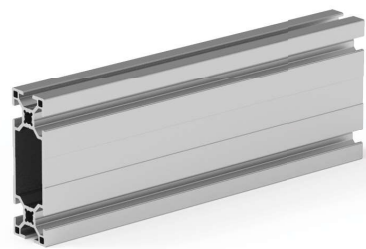
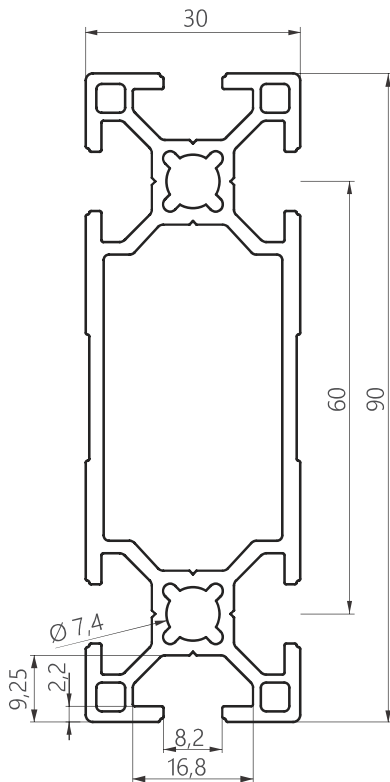
Profilo al. 30 x 90



Al. profile 30 x 90



Al.-Profil 30 x 90



Code



Al. profile 30 x 90

10006



Al. profil 40 x 40



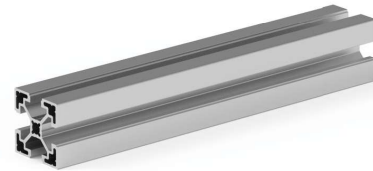
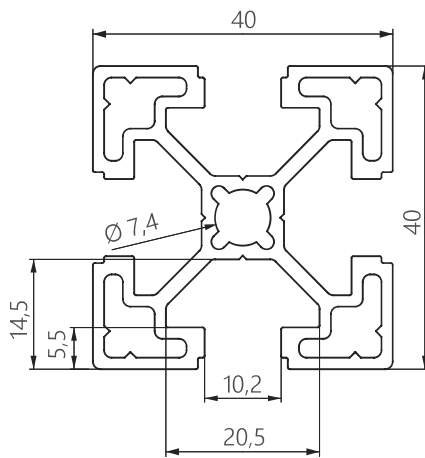
Profilo al. 40 x 40



Al. profile 40 x 40



Al.-Profil 40 x 40



Code

	Al. profile 40 x 40	10021
--	---------------------	-------



Al. profil 40 x 40 C1



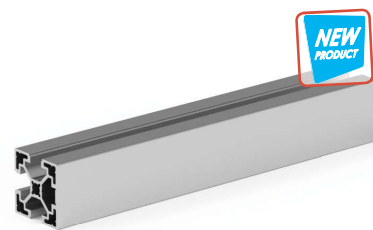
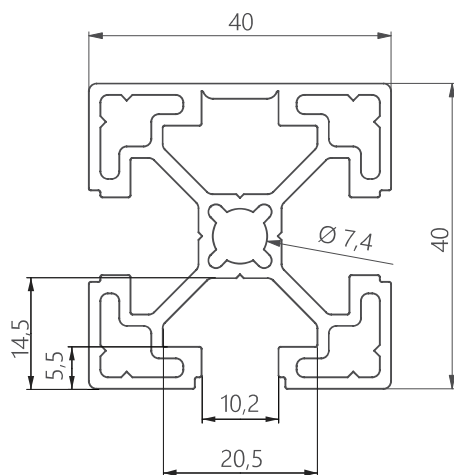
Profilo al. 40 x 40 C1



Al. profile 40 x 40 C1



Al.-Profil 40 x 40 C1



Code

	Al. profile 40 x 40 C1	10026
--	------------------------	-------



Al. profil 40 x 40 C2



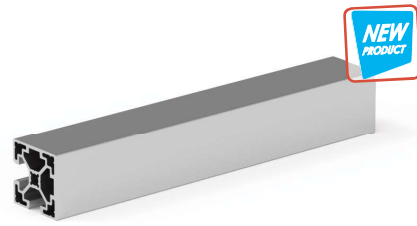
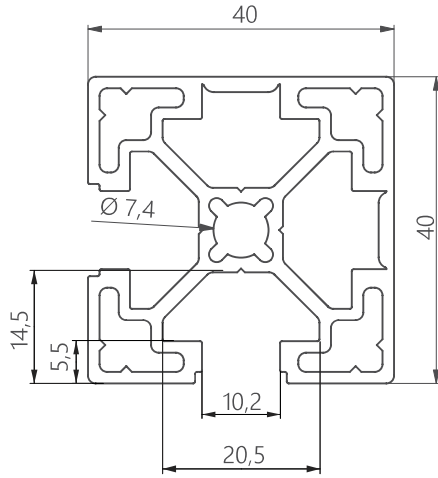
Profilo al. 40 x 40 C2



Al. profile 40 x 40 C2



Al.-Profil 40 x 40 C2



Code

	Al. profile 40 x 40 C2	10027
--	------------------------	-------



Al. profil 40 x 80



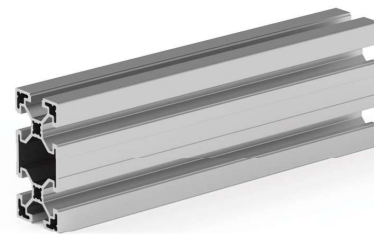
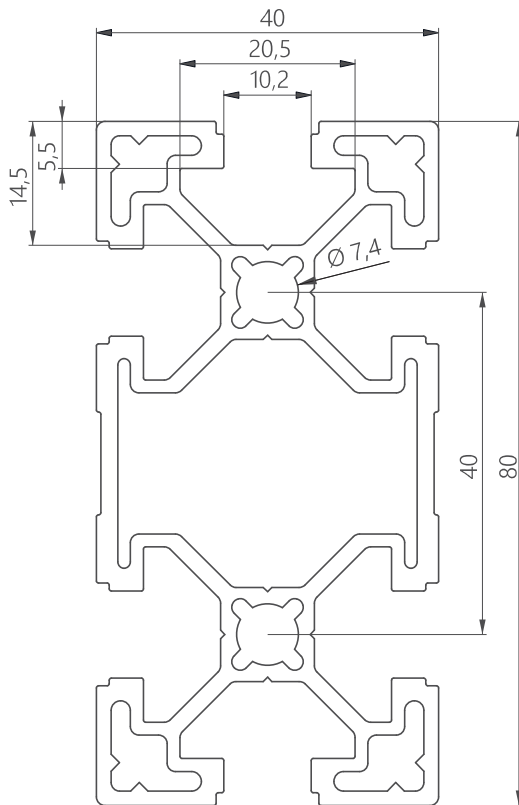
Profilo al. 40 x 80



Al. profile 40 x 80



Al.-Profil 40 x 80



Code

	Al. profile 40 x 80	10022
--	---------------------	-------



Al. profil 45 x 45 L



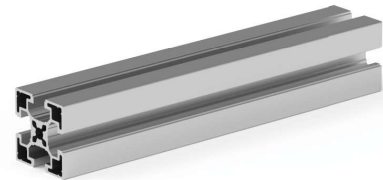
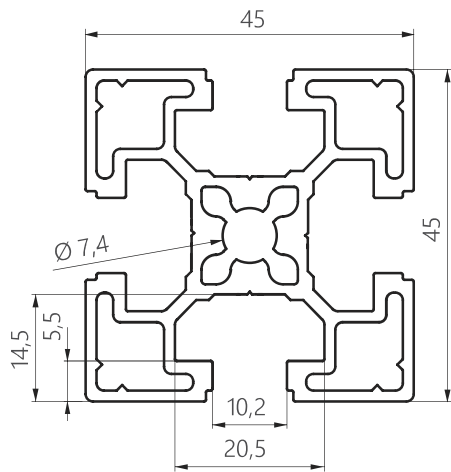
Profilo al. 45 x 45 L



Al. profile 45 x 45 L



Al.-Profil 45 x 45 L



Code

Al EI	L	M8	M10	M12	10	Al. profile 45 x 45 L	10007
----------	---	----	-----	-----	----	-----------------------	-------



Al. profil 45 x 45 H



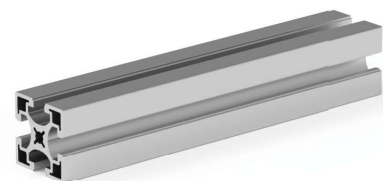
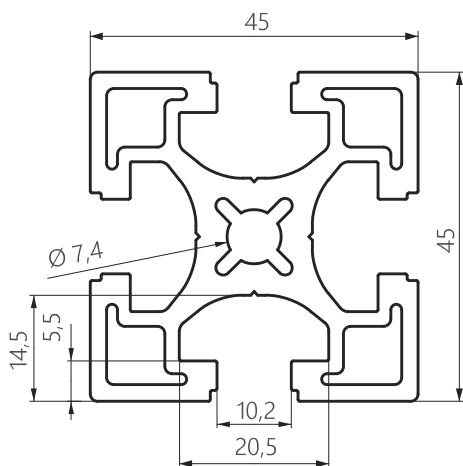
Profilo al. 45 x 45 H



Al. profile 45 x 45 H



Al.-Profil 45 x 45 H



Code

Al EI	H	M8	M10	M12	10	Al. profile 45 x 45 H	10008
----------	---	----	-----	-----	----	-----------------------	-------



Al. profil 45 x 45 C1



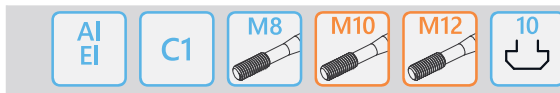
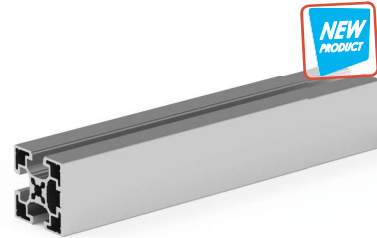
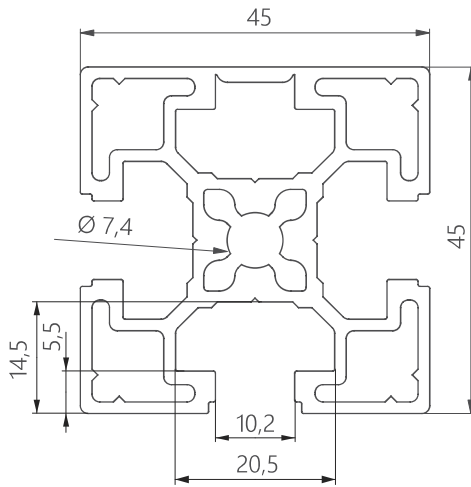
Profilo al. 45 x 45 C1



Al. profile 45 x 45 C1



Al.-Profil 45 x 45 C1



Al. profile 45 x 45 C1

Code

10009



Al. profil 45 x 45 C2



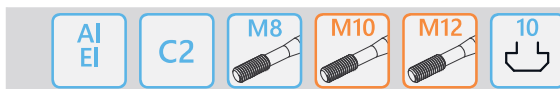
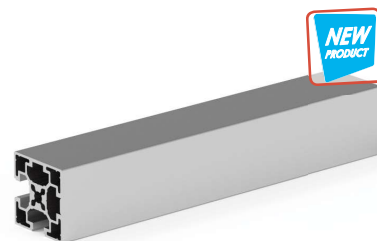
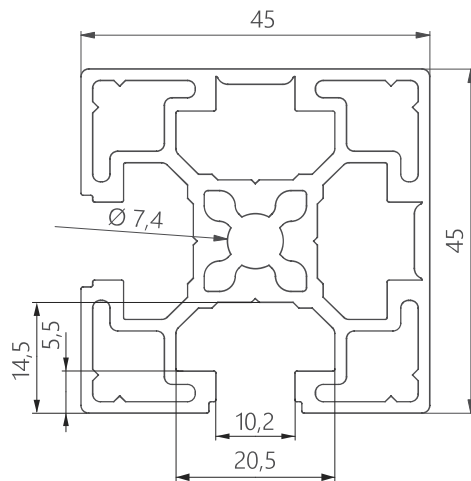
Profilo al. 45 x 45 C2



Al. profile 45 x 45 C2



Al.-Profil 45 x 45 C2



Al. profile 45 x 45 C2

Code

10028



Al. profil 45 x 45 R



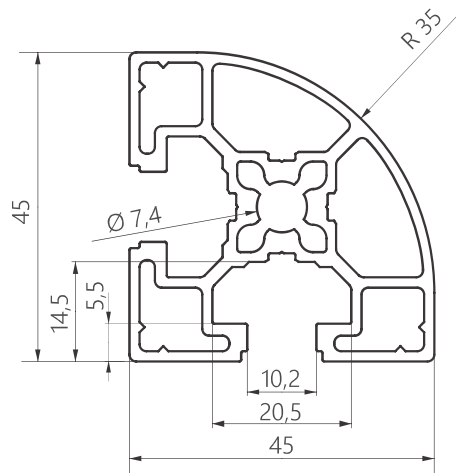
Profilo al. 45 x 45 R



Al. profile 45 x 45 R



Al.-Profil 45 x 45 R



Code

AI EI	R	M8	M10	10	Al. profile 45 x 45 R	10010
----------	---	----	-----	----	-----------------------	-------



Al. profil 45 x 60



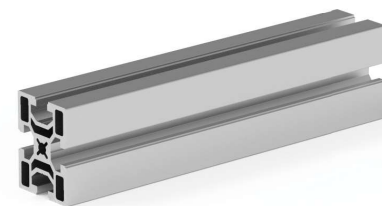
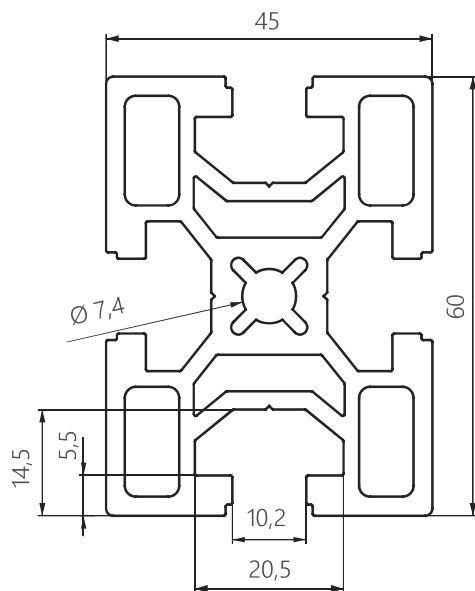
Profilo al. 45 x 60



Al. profile 45 x 60



Al.-Profil 45 x 60



Code

AI EI	M8	M10	M12	10	Al. profile 45 x 60	10013
----------	----	-----	-----	----	---------------------	-------



Al. profil 45 x 90 L



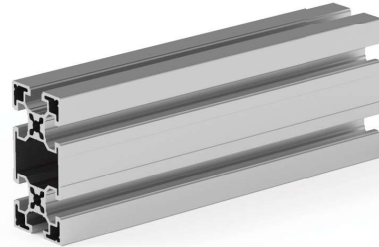
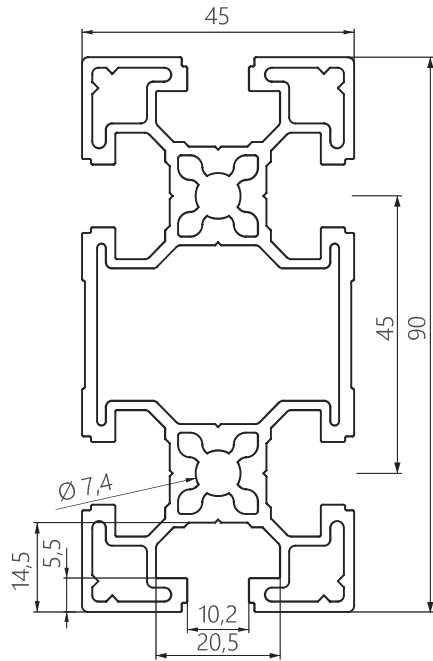
Profilo al. 45 x 90 L



Al. profile 45 x 90 L



Al.-Profil 45 x 90 L



Code

Al EI	L	M8	M10	M12	10	Al. profile 45 x 90 L	10011
----------	---	----	-----	-----	----	-----------------------	-------



Al. profil 45 x 90 H



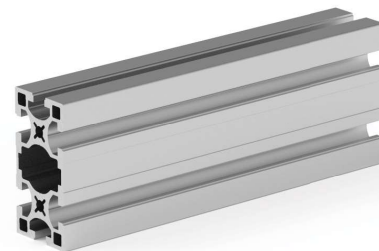
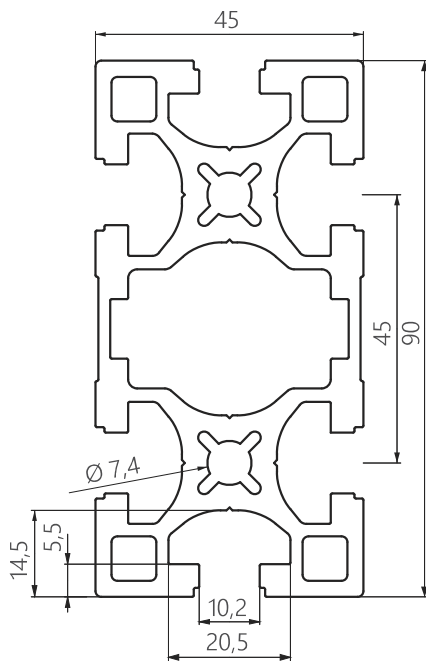
Profilo al. 45 x 90 H



Al. profile 45 x 90 H



Al.-Profil 45 x 90 H



Code

Al EI	H	M8	M10	M12	10	Al. profile 45 x 90 H	10012
----------	---	----	-----	-----	----	-----------------------	-------



Al. profil 45 x 135



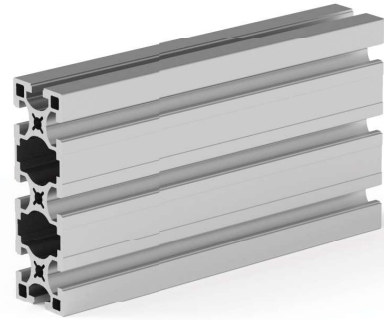
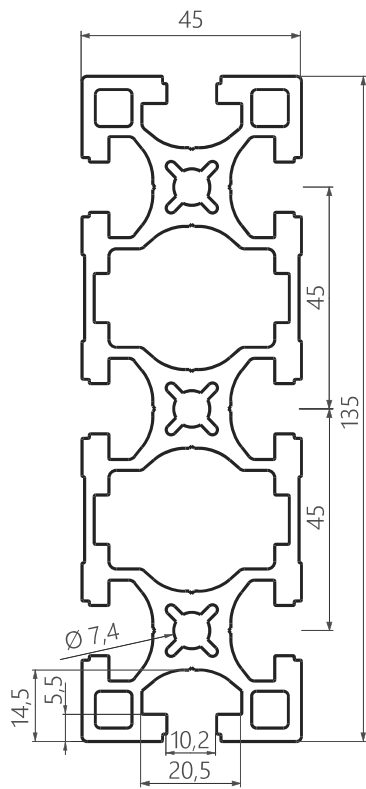
Profilo al. 45 x 135



Al. profile 45 x 135



Al.-Profil 45 x 135



Code

AI EI	M8	M10	M12	10	Al. profile 45 x 135	10014
----------	----	-----	-----	----	----------------------	-------



Al. profil 60 x 60



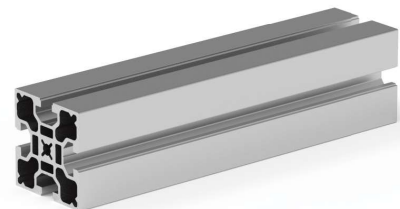
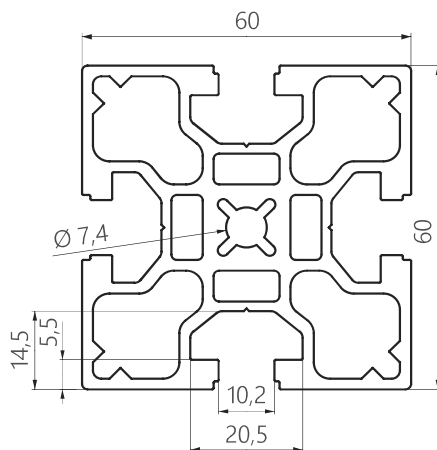
Profilo al. 60 x 60



Al. profile 60 x 60



Al.-Profil 60 x 60



Code

AI EI	M8	M10	M12	10	Al. profile 60 x 60	10015
----------	----	-----	-----	----	---------------------	-------



Al. profil 60 x 90



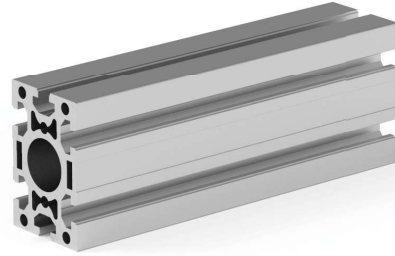
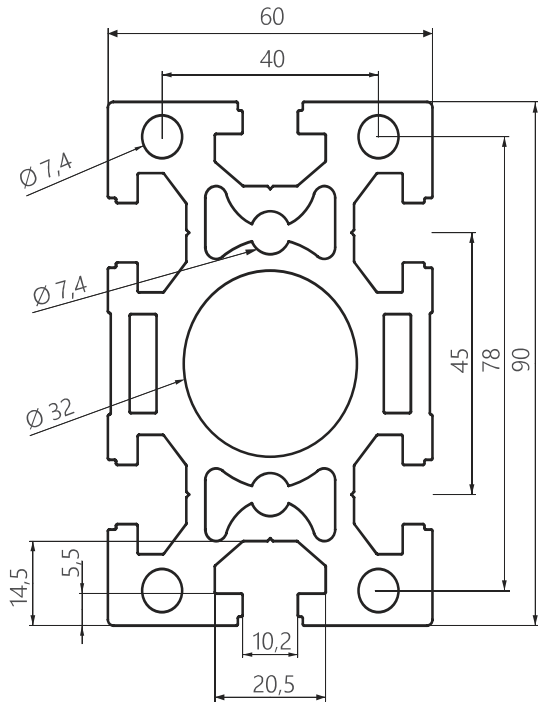
Profilo al. 60 x 90



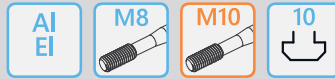
Al. profile 60 x 90



Al.-Profil 60 x 90



Code



Al. profile 60 x 90

10016



Al. profil 80 x 80



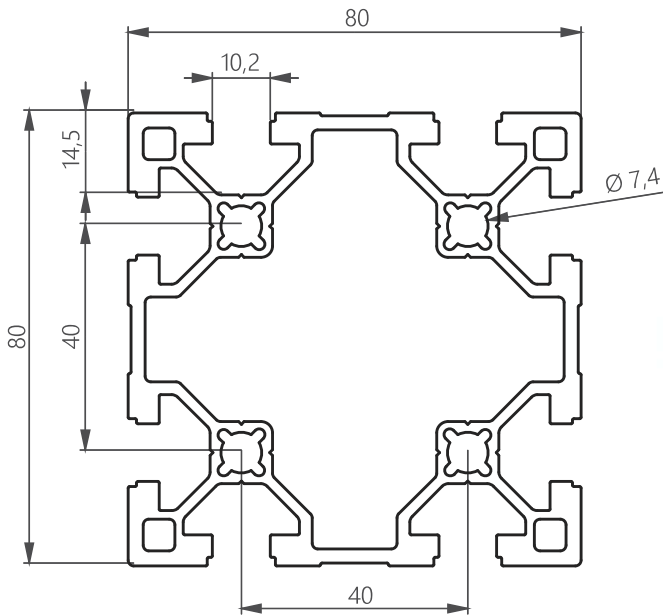
Profilo al. 80 x 80



Al. profile 80 x 80



Al.-Profil 80 x 80



Code



Al. profile 80 x 80

10023



Al. profil 90 x 90 L



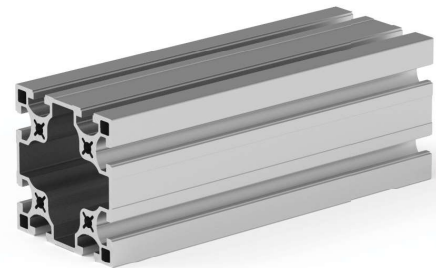
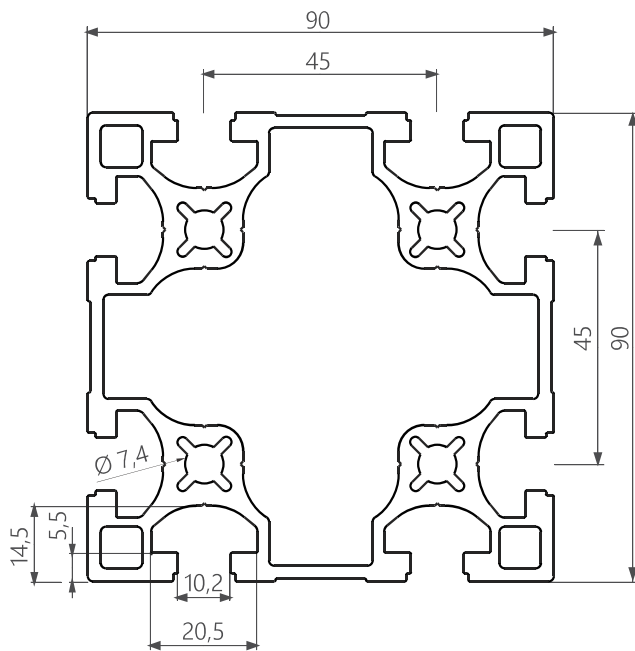
Profilo al. 90 x 90 L



Al. profile 90 x 90 L



Al.-Profil 90 x 90 L



Code

AI	EI	L	M8	M10	M12	10	Al. profile 90 x 90 L	10017
----	----	---	----	-----	-----	----	-----------------------	-------



Al. profil 90 x 90 H



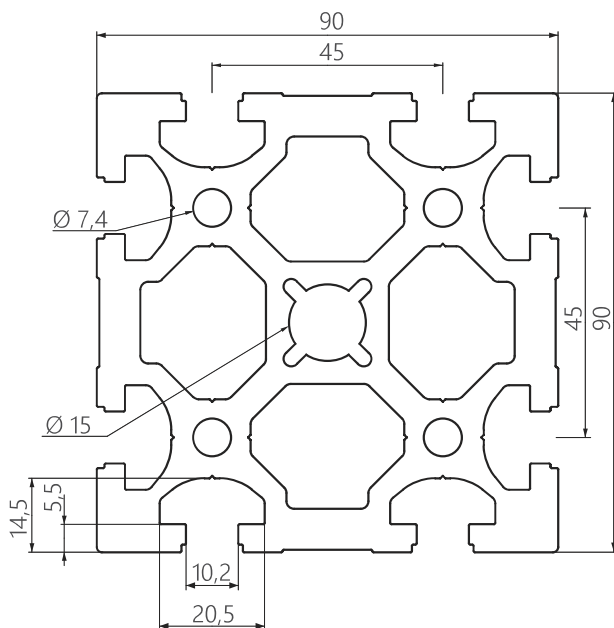
Profilo al. 90 x 90 H



Al. profile 90 x 90 H



Al.-Profil 90 x 90 H



Code

AI	EI	H	M8	M10	M12	M16	10	Al. profile 90 x 90 H	10018
----	----	---	----	-----	-----	-----	----	-----------------------	-------



Al. profil 22,5 x 180



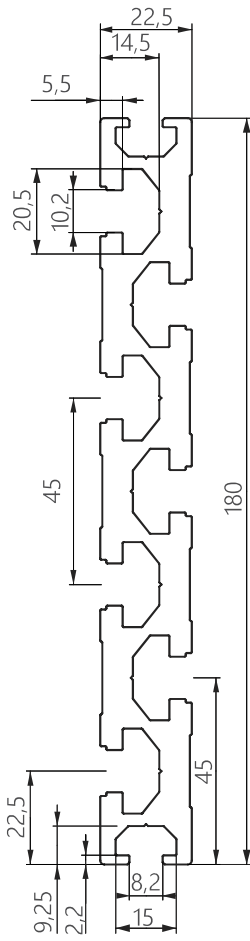
Profilo al. 22,5 x 180



Al. profile 22,5 x 180



Al.-Profil 22,5 x 180



Code



Al. profile 22,5 x 180

10019



Al. profil 90 x 180



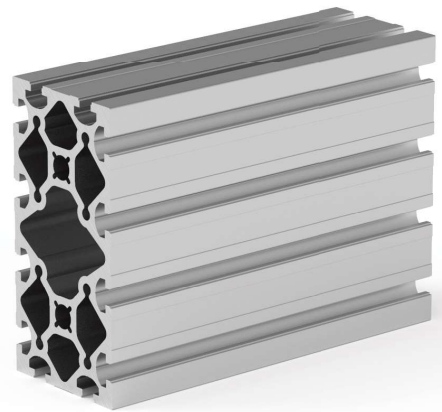
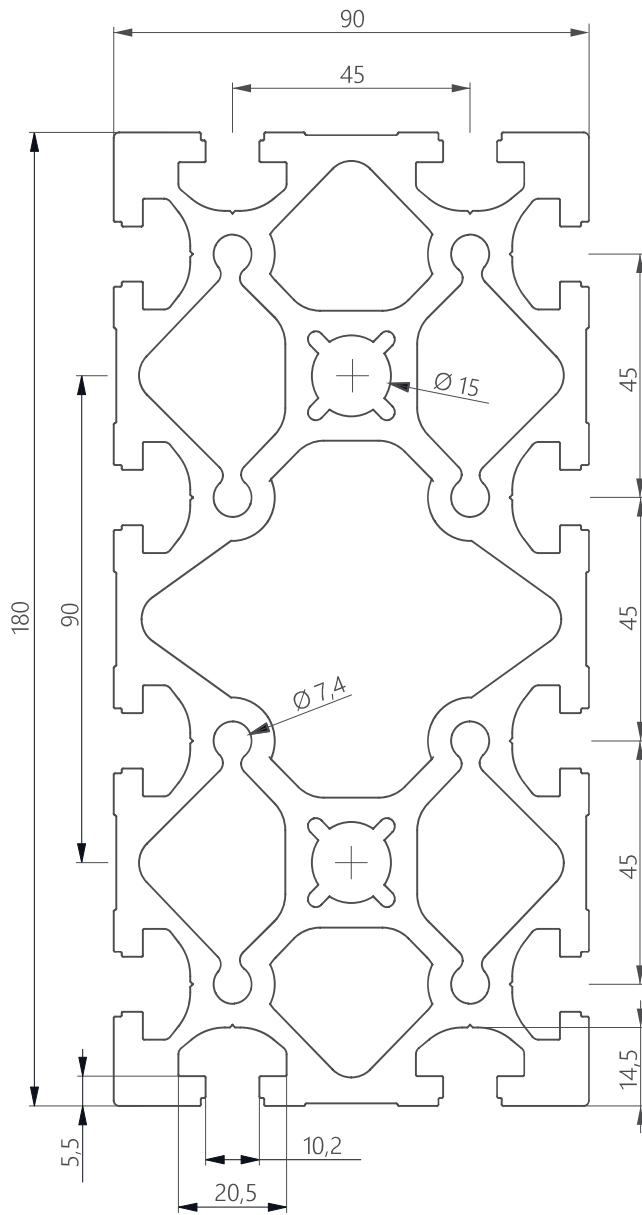
Profilo al. 90 x 180



Al. profile 90 x 180



Al.-Profil 90 x 180



Code



Al. profile 90 x 180

10020

