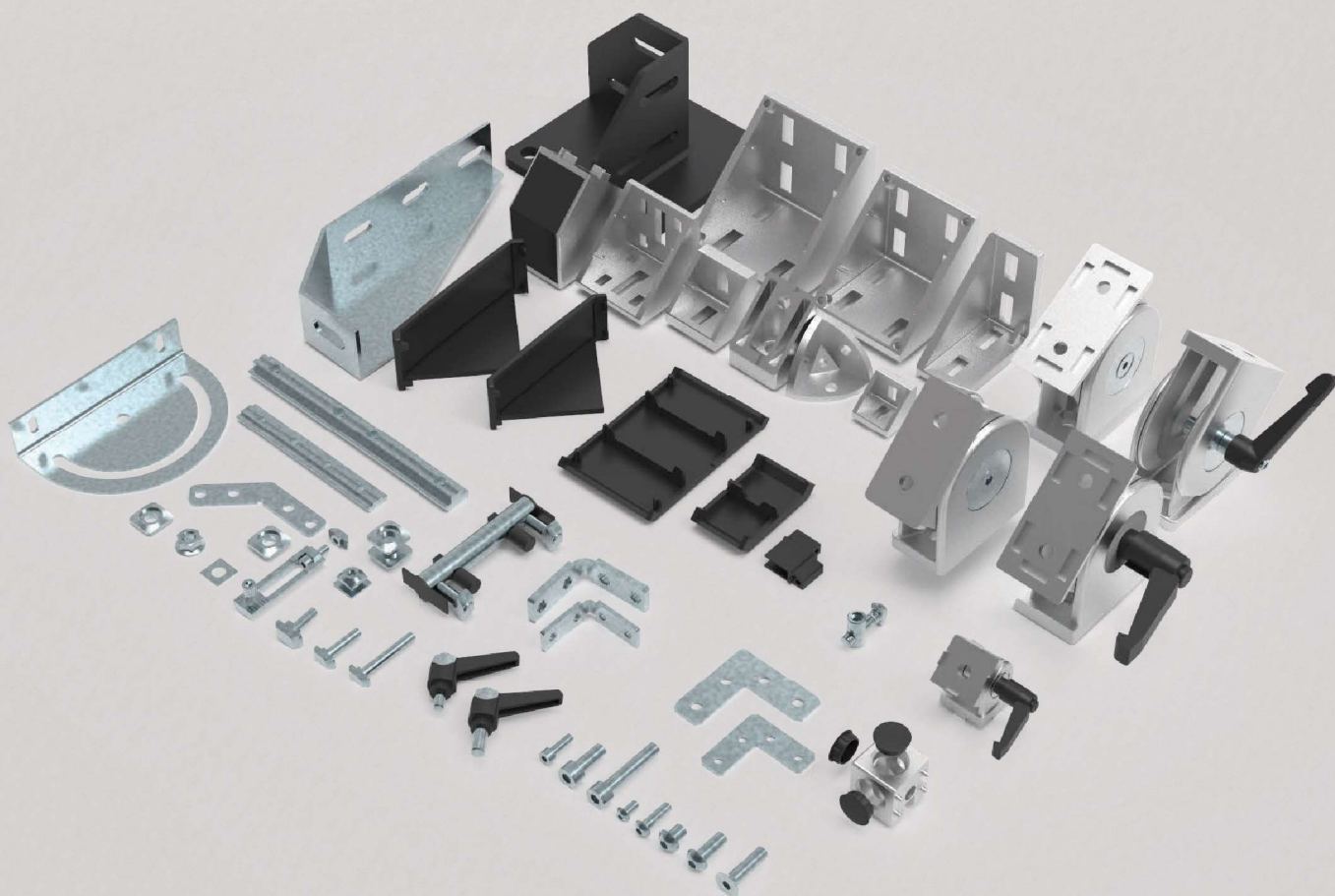




LIPRO

Vežni elementi
Joining elements
Fisaggi
Verbindungselemente



PROFILE CONNECTION LOAD CARRYING CAPACITY


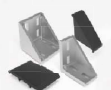
















				(±5%) 					
		Code							
		11097	M8	20	800 N	43 Nm			
		11098	M8	25	1000 N	65 Nm			
		11099	M8	20					
		11140	M8	20					
		11141	M8	25					
		11100	M8	25					
		11048	M8	25					
		11052	M8	25					
		11129	Ø8	25					
		11152	Ø17	20	4 000 N	180 Nm	40 Nm		
		11133	Ø17	20	4 000 N	180 Nm	60 Nm		
		11138	Ø17	20	4 000 N	200 Nm	80 Nm		
		11092	Ø17	20	5 000 N	800 Nm	170 Nm		
		11134	Ø17	20	5 000 N	800 Nm	200 Nm		

				(±5%) 						
		Code	Profile							
		11101	30x30	10	1 250 N	25 Nm	75 Nm	-		
		11109	30x60	10	2 500 N	100 Nm	170 Nm	25 Nm		
		11142	40x40	25	3 000 N	55 Nm	145 Nm	35 Nm		
		11084	40x80	25	6 000 N	180 Nm	400 Nm	60 Nm		
		11103	45x45	25	3 000 N	60 Nm	160 Nm	-		
		11110	45x90	25	6 000 N	180 Nm	400 Nm	60 Nm		
		11105	60x60	25	3 000 N	125 Nm	150 Nm	-		
		11087	80x80	25	14 000 N	500 Nm	1 000 Nm	400 Nm		
		11107	90x90	25	12 000 N	370 Nm	800 Nm	200 Nm		

				(±5%) 						
		Code	Profile							
		11147	30x30	25	70 Nm					
		11148	40x40	35	85 Nm					
		11149	45x45	35	170 Nm					

				(±5%) 						
		Code	Profile							
	┌	11117	30x30	6						
		11157	40x40	10						
		11118	45x45	10						
		11119	30x30	6						
		11120	45x45	10						
	└	11135	30x30	7	500 Nm	50 Nm	-	7 Nm		
		11136	45x45	12	500 Nm	50 Nm	-	10 Nm		
		11153	30x30	7	500 Nm	50 Nm	-	7 Nm		
		11155	45x45	12	500 Nm	50 Nm	-	10 Nm		

Kazalo
Index
Indice
Inhalt

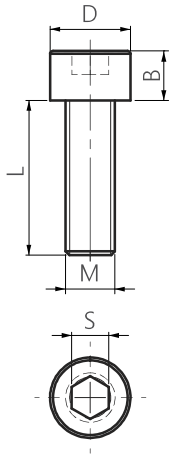
Screws	40			54-63	Brackets, Cover caps for brackets
Threaded inserts	41			63-67	3-way brackets, Cover caps
Hammer head screws, Flange nuts	42-43			67-69	Cube and Angle connectors 45°
Washers, Hammer nuts	43-45			69	Corner connector
Square nuts	46			70-71	Inner and outer connectors
T-slot nuts, Roll-in T nuts with spring	47-49			72-73	Floor brackets
Linear joints	50			73-74	Adjustable pivot brackets 180°
Frontal connector sets	51			74-79	Pivot joints
Lateral connector sets	52-53			79-83	Bolts, Milling connectors



Vijak s cilindrično glavo
Cylinder head screw



Vite con testa cilindrica
Zylinderkopfschraube



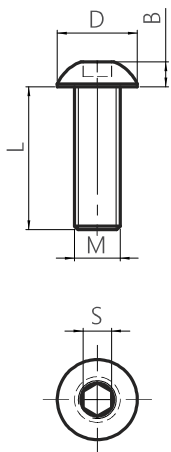
Zn Fe							Code
	M	L	D	B	S		
	4	40	6,8	4	3	4g	11026
	5	16	8,3	5	4	4g	11001
	5	20	8,3	5	4	4g	11002
	6	14	9,8	6	5	5g	11003
	6	16	9,8	6	5	6g	11004
	6	20	9,8	6	5	6g	11005
	6	30	9,8	6	5	8g	11006
	8	16	12,7	8	6	11g	11007
	8	20	12,7	8	6	13g	11008
	8	25	12,7	8	6	14g	11009
	8	40	12,7	8	6	19g	11010



Vijak z lečasto glavo
Round-head screw



Vite con testa bombata
Linsenkopfschraube



Zn Fe							Code
	M	L	D	B	S		
	5	10	9,5	2,8	3	2g	11011
	5	12	9,5	2,8	3	2g	11012
	5	16	9,5	2,8	3	3g	11013
	5	20	9,5	2,8	3	3g	11014
	5	25	9,5	2,8	3	4g	11015
	6	10	10,5	3,3	4	3g	11016
	6	12	10,5	3,3	4	3g	11017
	6	16	10,5	3,3	4	4g	11018
	6	20	10,5	3,3	4	5g	11019
	6	25	10,5	3,3	4	5g	11020
	8	10	14	4,4	5	6g	11021
	8	14	14	4,4	5	8g	11022
	8	20	14	4,4	5	9g	11023
	8	25	14	4,4	5	11g	11024
	8	30	14	4,4	5	13g	11025



Vijak z vgreznjeno glavo



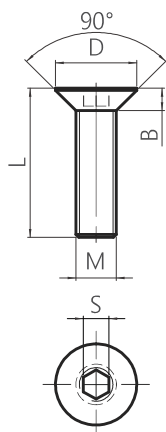
Countersunk screw



Vite con testa svasata



Senkkopfschraube



						Code	
M	L	D	B	S			
5	16	12	4	4	4g	11164	
5	20	12	4	4	4g	11165	
6	12	12	4	4	4g	11162	
6	16	12	4	4	4g	11027	
6	20	12	4	4	4g	11028	
8	25	16	5	5	10g	11029	
8	35	16	5	5	13g	11030	



Navojni zatič



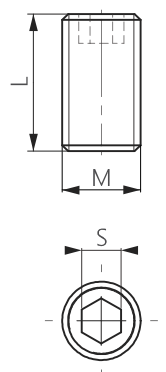
Threaded insert



Perno filettato



Gewindeeinsatz



					Code	
M	L	S				
6	8	4	2g	11031		
6	14	4	2g	11032		
8	10	5	2g	11033		
8	14	5	3g	11034		
8	40	5	11g	11035		



Samorezni vijak



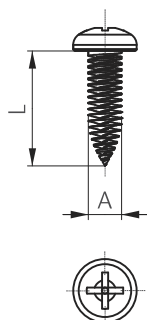
Self-tapping screw



Vite autofilettante



Selbstschneidende Schraube



				Code	
A	L				
Ø 5,5	19	4g	11036		



Vijak s kladivasto glavo



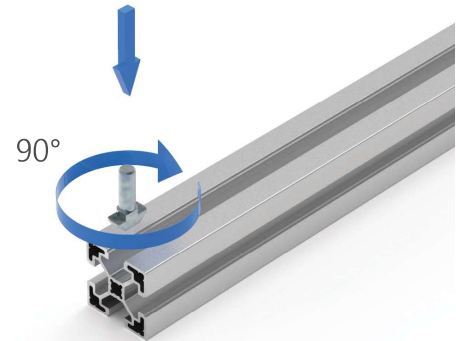
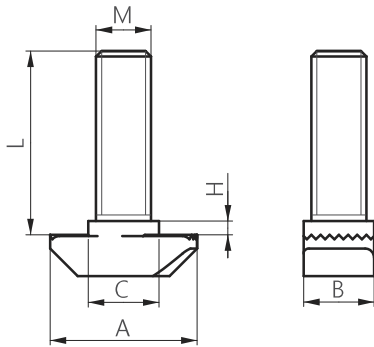
Vite con testa a martello



Hammer head screw



Hammerkopfschraube



								Code	
Zn Fe	8	M	L	B	C	A	H		
		6	20	7,7	7,7	16	1,5	7g	11037*
		6	25	7,7	7,7	16	1,5	8g	11038*
		6	30	7,7	7,7	16	1,5	9g	11039*
		6	40	7,7	7,7	16	1,5	10g	11040*
		6	60	7,7	7,7	16	1,5	10g	11041*
Zn Fe	10								
		6	20	9,7	9,7	19	3	10g	11042*
		6	25	9,7	9,7	19	3	12g	11043*
		6	30	9,7	9,7	19	3	13g	11044*
		6	40	9,7	9,7	19	3	15g	11045*
		6	60	9,7	9,7	19	3	18g	11046*
		8	20	8,5	9,7	19	3	13g	11047
		8	25	8,5	9,7	19	3	14g	11048
		8	30	9,7	9,7	19	3	15g	11049*
		8	40	9,7	9,7	19	3	19g	11050*
		8	60	9,7	9,7	19	3	25g	11051*

*

Sestavljen | Composed | Composto | Zusammengesetzt



Matica s prirobnico



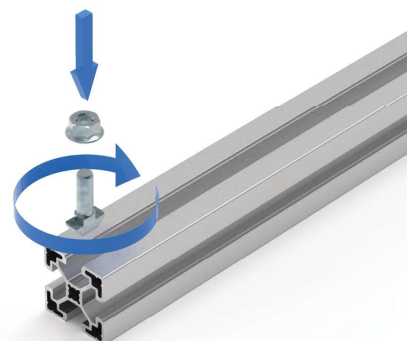
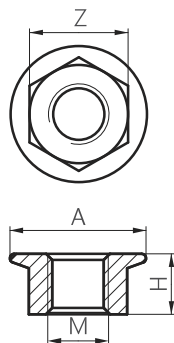
Flange nut



Dado con flangia



Flanschmutter



Code

Zn Fe	M	A	H	Z		
	6	Ø14,2	6	10	4g	11139
	8	Ø17,9	8	13	7g	11052



Podložka utorna-kvadratna U8



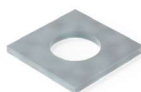
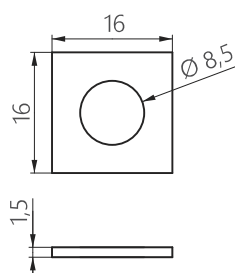
Washer U8



Rondella quadra C8



Vierkant-Unterlegscheibe U8



Code

Zn Fe			
	8		2g
			11053



Podložka utorna kvadratna nizka U10



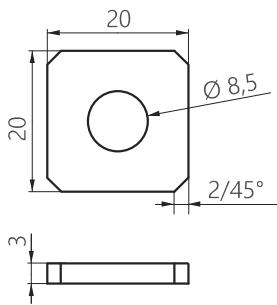
Rondella-slim C10



Square washer-slim U10



Quadratische Vierkant-Unterlegscheibe-dünn U10



			Code
Zn Fe	10		
6g			11166



Podložka utorna U10



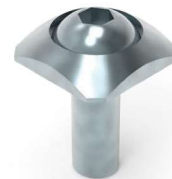
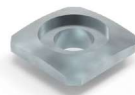
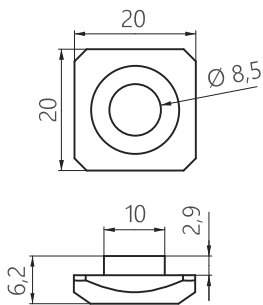
Rondella C10



Washer U10



Vierkant-Unterlegscheibe U10



			Code
Zn Fe	10		
10g			11054



Kladivasta matica



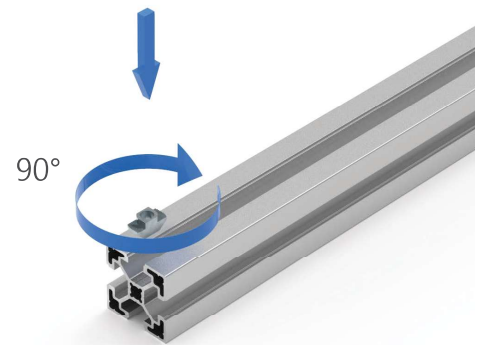
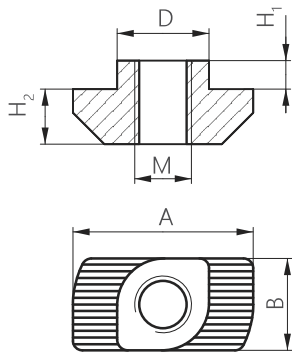
Hammer nut



Dado a martello



Hammermutter



									Code
Zn Fe	8/10	M	A	B	H ₁	H ₂	D		
	8	4	16	7,7	1,5	4,5	7,7	4g	11055
	8	5	16	7,7	1,5	4,5	7,7	3g	11056
	8	6	16	7,7	1,5	4,5	7,7	3g	11057
	10	4	19	9,7	3	5,8	9,7	8g	11058
	10	5	19	9,7	3	5,8	9,7	7g	11059
	10	6	19	9,7	3	5,8	9,7	7g	11060
	10	8	19	9,7	3	5,8	9,7	6g	11061



Matica utorna



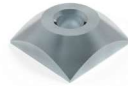
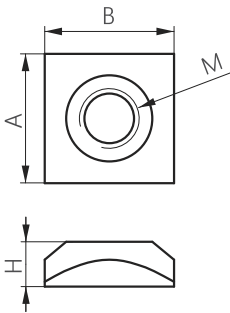
Dado quadro



Square nut



Vierkantmutter



Code

Zn Fe	8	M	A	B	H		
		5	13	13	5,8	5g	11062
		6	13	13	5,8	5g	11063
		8	13	13	5,8	4g	11064



Matica utorna



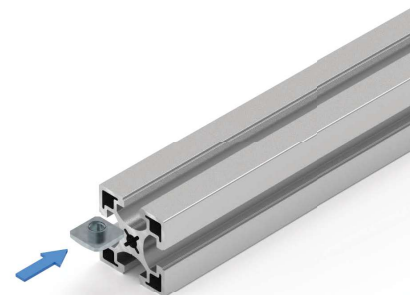
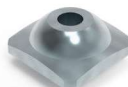
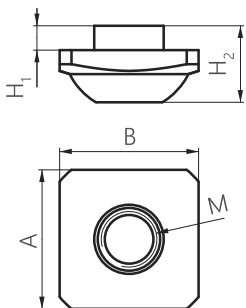
Dado quadro



Square nut



Vierkantmutter



Code

Zn Fe	10	M	A	B	H ₁	H ₂		
		6	20	20	3	9,3	18g	11065
		8	20	20	3	9,3	15g	11066



Utorni kamen



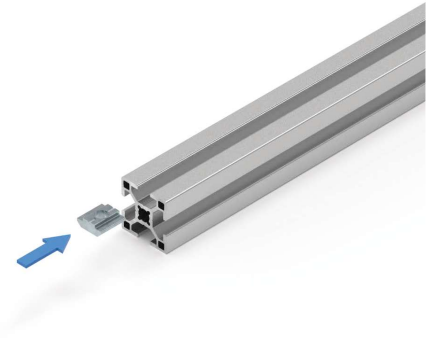
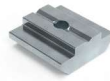
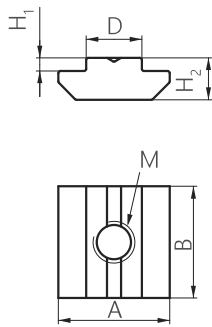
T - slot nut



Cursore per cava



Nutenstein



Code

Zn Fe	8	M	A	B	D	H ₁	H ₂	Weight	Code
		4	16	16	8	1,6	5,9	9g	11067
		5	16	16	8	1,6	5,9	8g	11068
		6	16	16	8	1,6	5,9	8g	11069
		8	16	16	8	1,6	5,9	7g	11070



Utorni kamen z vzmetjo



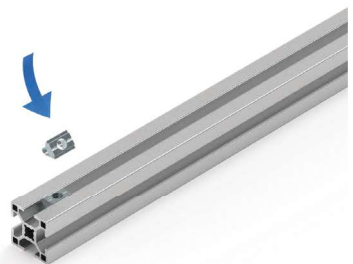
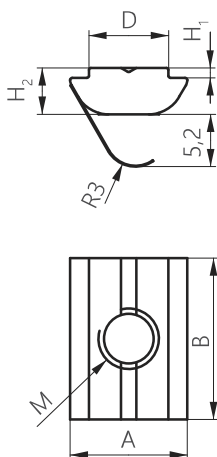
Roll-in T nut with spring



Cursore Roll-in con molla



Roll-in Federmutter



Code

Zn Fe	8	M	A	B	D	H ₁	H ₂	Weight	Code
		4	11,6	16	7,9	1	4,6	5g	11071
		5	11,6	16	7,9	1	4,6	5g	11072
		6	11,6	16	7,9	1	4,6	4g	11073
		8	11,6	16	7,9	1	4,6	4g	11074



Utorni kamen



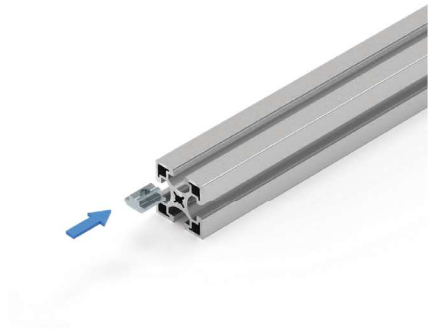
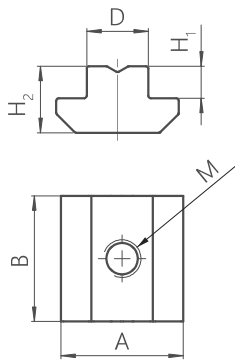
Cursore per cava



T - slot nut



Nutenstein



Code

Zn Fe	10	M	A	B	D	H ₁	H ₂		
		4	19,5	20	9,7	5,4	10,4	22g	11075
		5	19,5	20	9,7	5,4	10,4	21g	11076
		6	19,5	20	9,7	5,4	10,4	20g	11077
		8	19,5	20	9,7	5,4	10,4	19g	11078



Utorni kamen-nizek



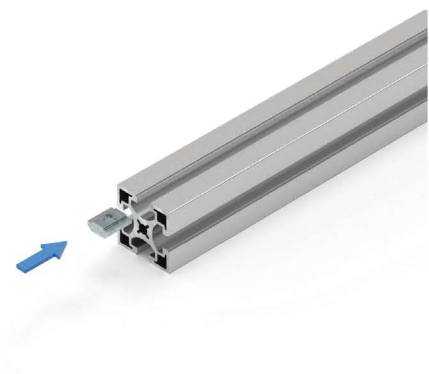
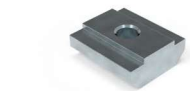
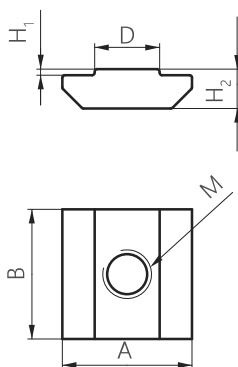
Cursore per cava-basso



T-slot nut-low



Nutenstein-niedrig



Code

Zn Fe	10	M	A	B	D	H ₁	H ₂		
		6	18	20	10	1,5	7,5	16g	11168
		8	18	20	10	1,5	7,5	14g	11169



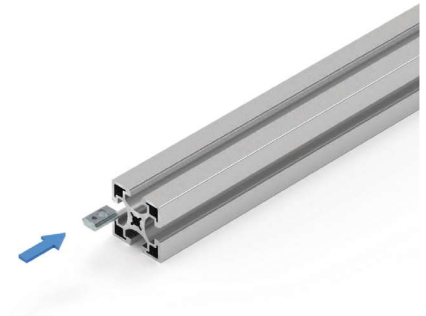
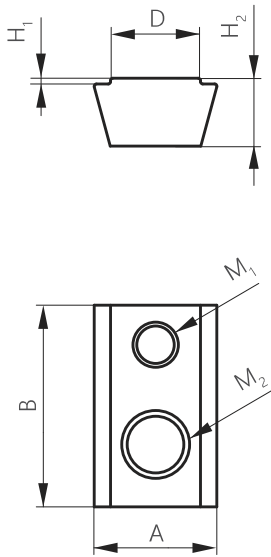
Utorni kamen nizek-Fix

T-slot nut low-Fix



Cursore per cava basso-Fix

Nutenstein niedrig-Fix



Zn Fe	8/10	M ₁	M ₂	A	B	D	H ₁	H ₂	Weight	Code
	8	4	6	10,8	17,8	7,9	0,5	6	4g	11170
	10	4	8	14,1	20	9,9	1,5	6	8g	11171



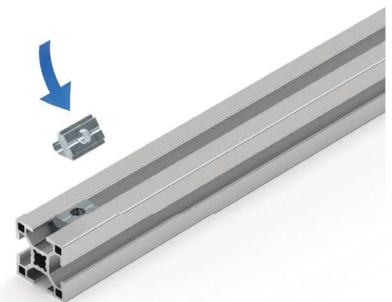
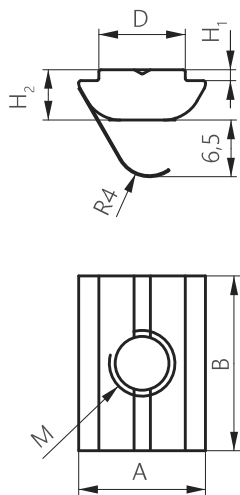
Utorni kamen z vzmetjo

Roll-in T nut with spring



Cursore Roll - in con molla

Roll-in Federmutter



Zn Fe	10	M	A	B	D	H ₁	H ₂	Weight	Code
		4	14	19	9,9	1,5	5,2	8g	11079
		5	14	19	9,9	1,5	5,2	8g	11080
		6	14	19	9,9	1,5	5,2	8g	11081
		8	14	19	9,9	1,5	5,2	7g	11082



Linearni spoj U8/U10



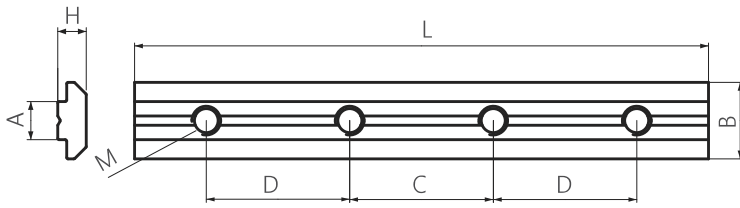
Giunto lineare C8/C10



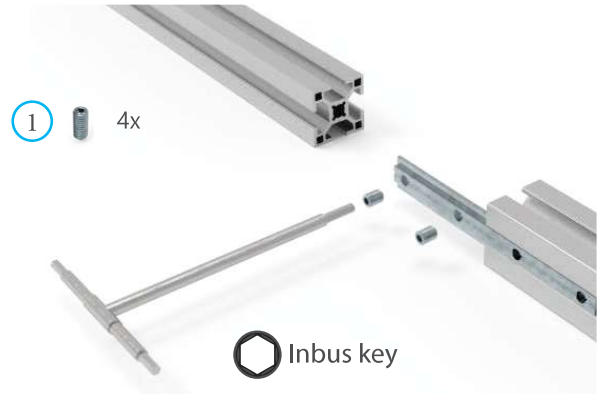
Linear joint U8/U10



Linear-Profilverbinder U8/U10



1 4x



Inbus key

Code

Zn Fe	8/10	L	M	A	B	D	C	H			
		8	120 mm	6	8	16	35	35	6	63g	11083
		10	180 mm	8	9,8	19,5	60	30	11	188g	11095

		Assembly components - sold separately					Code	
8	1	Threaded insert M6x8				41	3	11031
10	1	Threaded insert M8x14				41	4	11034



Profil utorni-Fe U8/U10



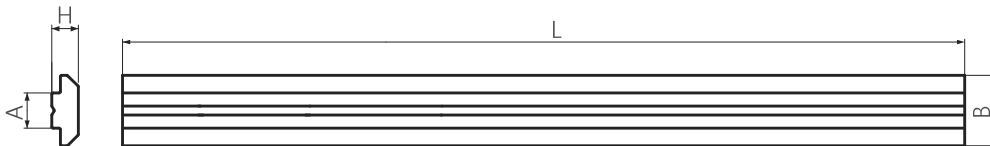
Profilo-Fe per cava C8/C10



Slot profil-Fe U8/U10



Nut Profil-Fe U8/U10



Code

Fe	8/10	L	A	B	H			
		8	1500 mm	8	16	6	580g/m	11094
		10	1500 mm	9,8	19,5	11	1100g/m	11096

Brez izvrtin-ni cinkan | Without bores-not galvanized | Senza fori-non zincato | Ohne Loch-nicht verzinkt



Spojní set čelni U8



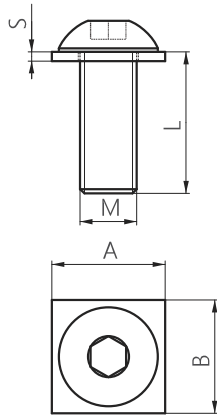
Kit fissaggio frontale C8



Front connector set U8



Frontverbinder-Set U8



Inbus key 5



Code

		M	L	A	B	S		
		8	20	16	16	1,5	12g	11097



Spojní set čelni U10



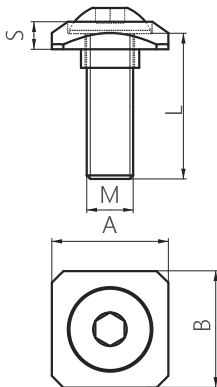
Kit fissaggio frontale C10



Front connector set U10



Frontverbinder-Set U10



Inbus key 5



Code

		M	L	A	B	S		
		8	25	20	20	3,3	20g	11098



Spojni set stranski U8/U8



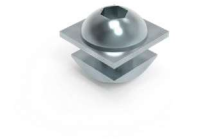
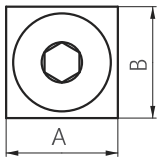
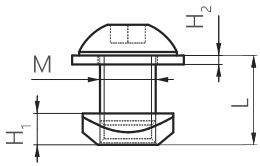
Kit fissaggio laterale C8/C8



Lateral connector set U8/U8



Seitenverbinder-Set U8/U8



Inbus key 5



Code

		M	L	A	B	H ₁	H ₂		
		8	10	16	16	5,8	1,5	12g	11099



Spojni set stranski U8/U10



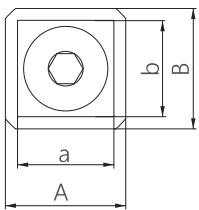
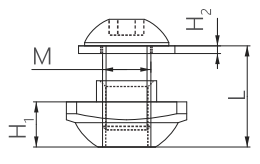
Kit fissaggio laterale C8/C10



Lateral connector set U8/U10



Seitenverbinder-Set U8/U10



Inbus key 5



Code

		M	L	A	B	a	b	H ₁	H ₂		
		8	14	20	20	16	16	6,3	1,5	22g	11140



Spojní set stranski U10/U8



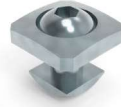
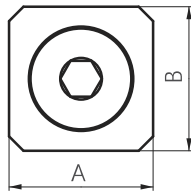
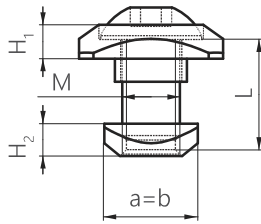
Lateral connector set U10/U8



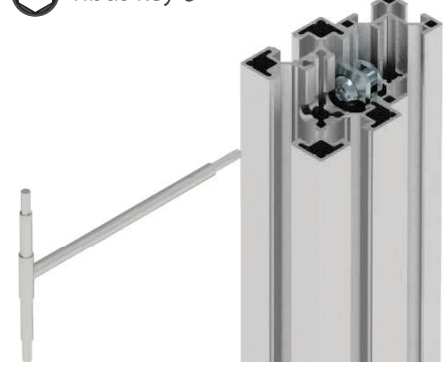
Kit fissaggio laterale C10/C8



Seitenverbinder-Set U10/U8



Inbus key 5



Code

Zn Fe	10/8	M	L	A	B	a	b	H ₁	H ₂		Code
		8	14	20	20	16	16	3,3	5,8	18g	11141



Spojní set stranski U10/U10



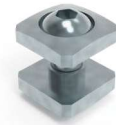
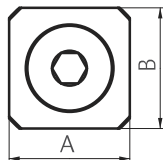
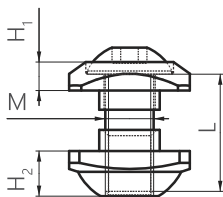
Lateral connector set U10/U10



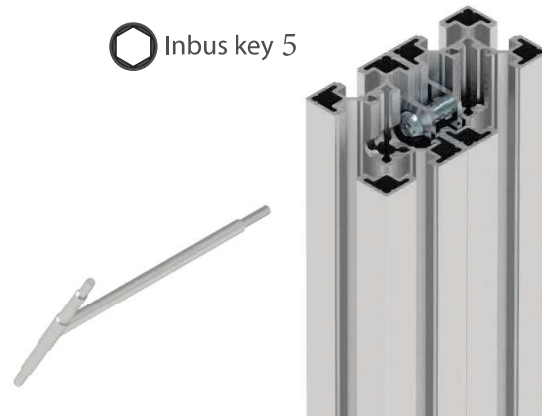
Kit fissaggio laterale C10/C10



Seitenverbinder-Set U10/U10



Inbus key 5



Code

Zn Fe	10/10	M	L	A	B	H ₁	H ₂		Code
		8	20	20	20	3,3	6,3	33g	11100



Al. kotnik 30 x 30



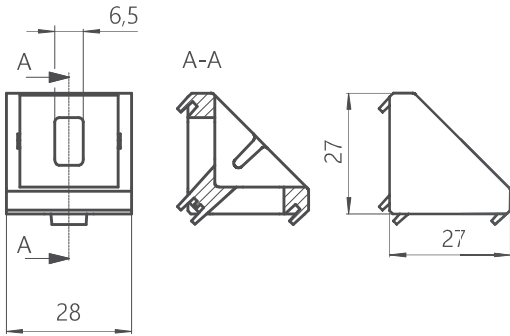
Angolare al. 30 x 30



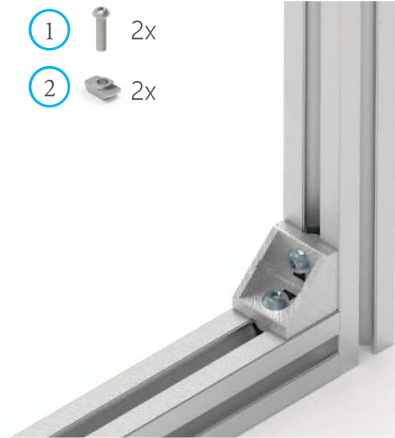
Al. bracket 30 x 30



Al.-Winkel 30 x 30



- ① 2x
- ② 2x



Code

Zn	8		
		20g	11101

Assembly components - sold separately			Code
①	Round-head screw M6x12	40	11017
②	Hammer nut M6	45	11057



Pokrov za kotnik 30 x 30



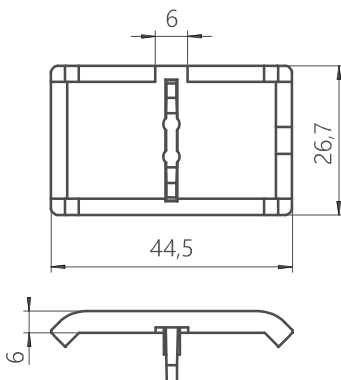
Tappo per angolare 30 x 30



Cover cap for bracket 30 x 30



Winkelabdeckkappe für 30 x 30



Code

PA6 #		
	6g	11102



Al. kotník 40 x 40



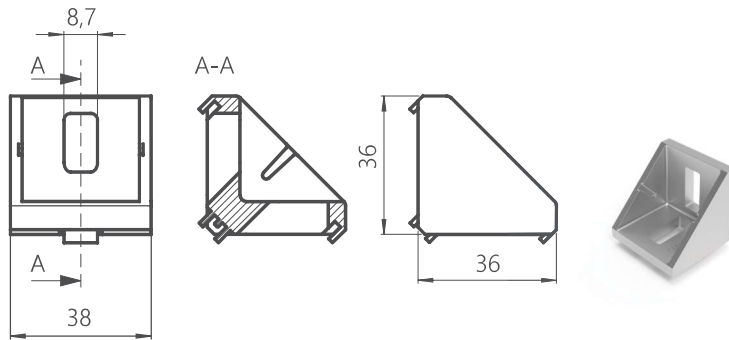
Angolare al. 40 x 40



Al. bracket 40 x 40



Al.-Winkel 40 x 40



			Code
Zn	10		
			34g
			11142

Assembly components - sold separately			Code
1	Hammer head screw M8x20		42 11047
2	Flange nut M8 16		43 11052



Pokrov za kotník 40 x 40



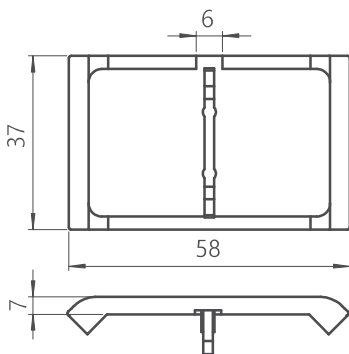
Tappo per angolare 40 x 40



Cover cap for bracket 40 x 40



Winkelabdeckkappe für 40 x 40



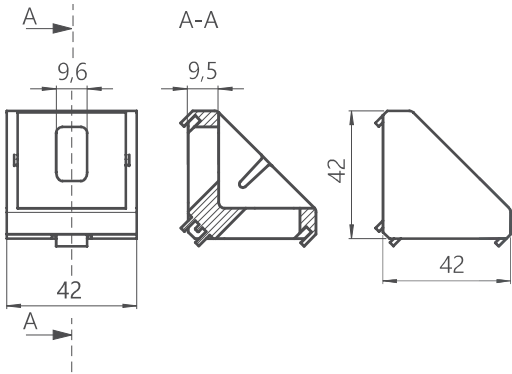
			Code
PA6	#		
			11g
			11143



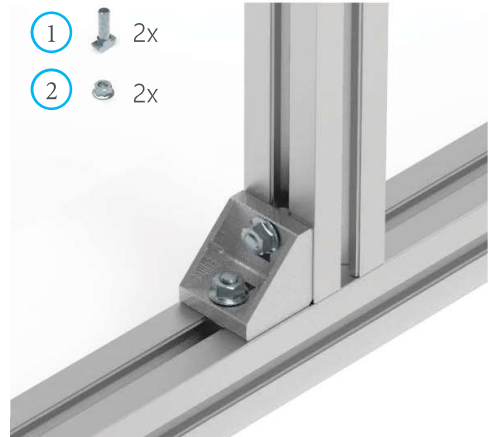
Al. kotnik 45 x 45
Al. bracket 45 x 45



Angolare al. 45 x 45
Al.-Winkel 45 x 45



- 1 2x
- 2 2x



Code		
Zn	10	
50g		11103

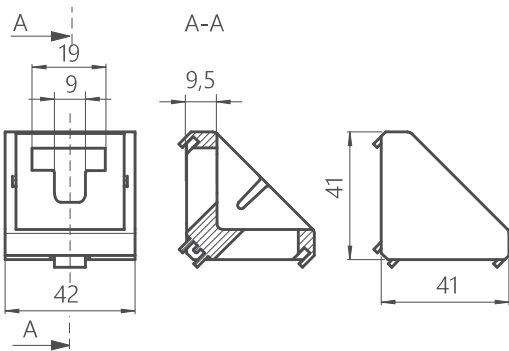
Assembly components - sold separately			Code
1	Hammer head screw M8x25	42	11048
2	Flange nut M8 16	43	11052



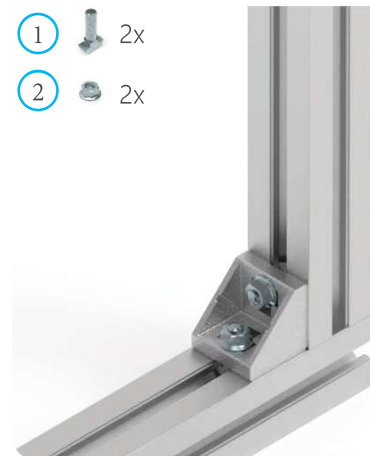
Al. kotnik 45 x 45 T
Al. bracket 45 x 45 T



Angolare al. 45 x 45 T
Al.-Winkel 45 x 45 T



- 1 2x
- 2 2x



Code		
Zn	10	
50g		11161

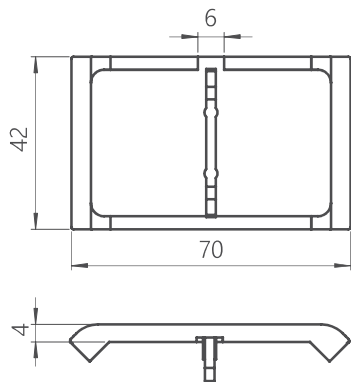
Assembly components - sold separately			Code
1	Hammer head screw M8x25	42	11048
2	Flange nut M8 16	43	11052



Pokrov za kotnik 45 x 45
Cover cap for bracket 45 x 45



Tappo per angolare 45 x 45
Winkelabdeckkappe für 45 x 45



Code

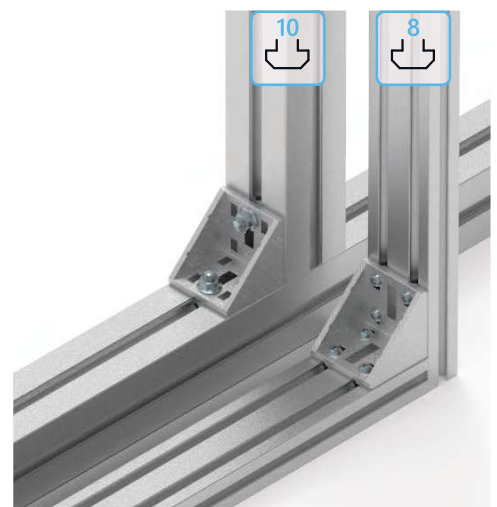
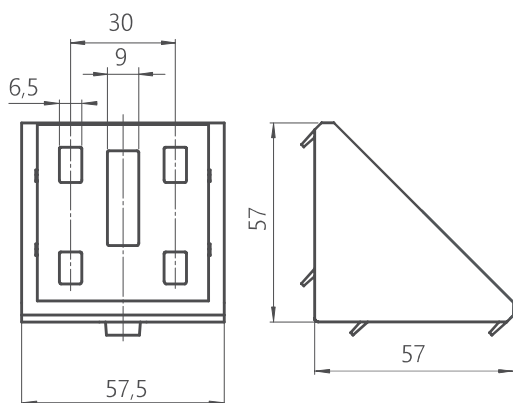
PA6 #		
16g	11104	



Al. kotnik 60 x 60
Al. bracket 60 x 60



Angolare al. 60 x 60
Al.-Winkel 60 x 60



Code

Zn	8/10		
		108g	11105



Assembly components - sold separately			Code
1	Round-head screw M6x12		40 11017
2	Hammer nut M6 U8		45 11057



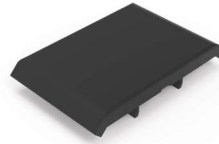
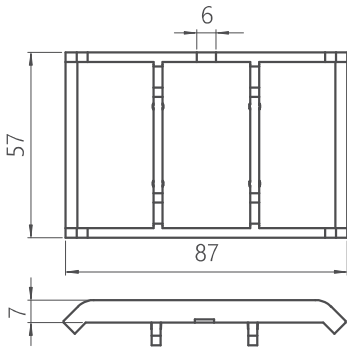
Assembly components - sold separately			Code
1	Hammer head screw M8x25		42 11048
2	Flange nut M8 16		43 11052



Pokrov za kotnik 60 x 60
Cover cap for bracket 60 x 60



Tappo per angolare 60 x 60
Winkelabdeckkappe für 60 x 60



Code

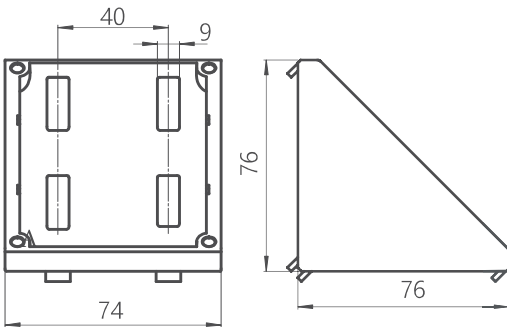
PA6 #		
	28g	11106



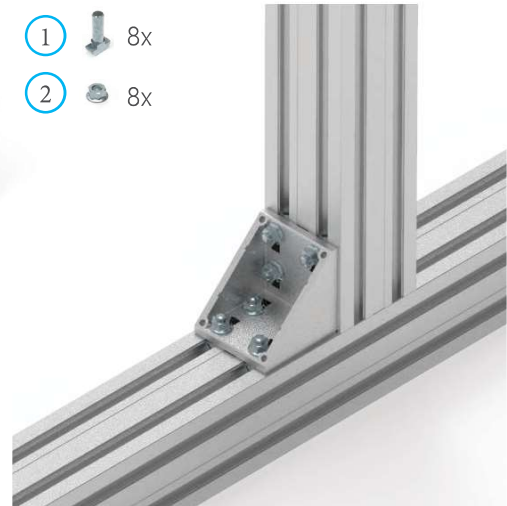
Al. kotnik 80 x 80
Al. bracket 80 x 80



Angolare al. 80 x 80
Al.-Winkel 80 x 80



- ① 8x
- ② 8x



Code

Zn		
	10	
	212g	11087

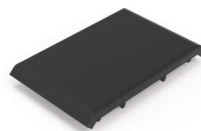
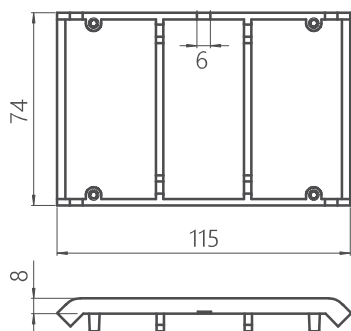
Assembly components - sold separately			Code
①	Hammer head screw M8x25		42 11048
②	Flange nut M8 16		43 11052



Pokrov za kotnik 80 x 80
Cover cap for bracket 80 x 80



Tappo per angolare 80 x 80
Winkelabdeckkappe für 80 x 80



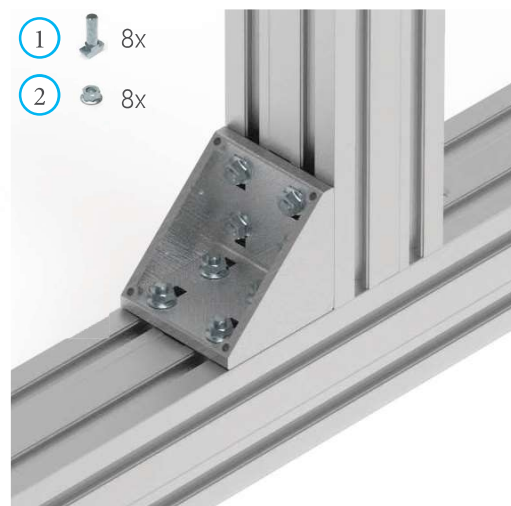
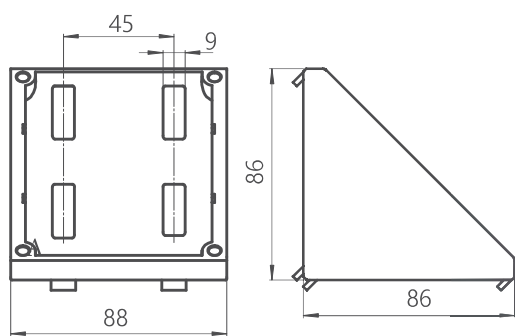
Code	
PA6 #	
42g	11088



Al. kotnik 90 x 90
Al. bracket 90 x 90



Angolare al. 90 x 90
Al.-Winkel 90 x 90



- 1 8x
- 2 8x

Code	
Zn	
10	337g
	11107

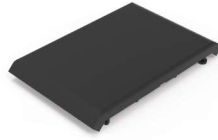
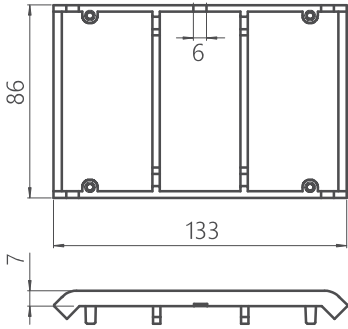
Assembly components - sold separately			Code
1	Hammer head screw M8x25		42 11048
2	Flange nut M8 16		43 11052



Pokrov za kotnik 90 x 90
Cover cap for bracket 90 x 90



Tappo per angolare 90 x 90
Winkelabdeckkappe für 90 x 90



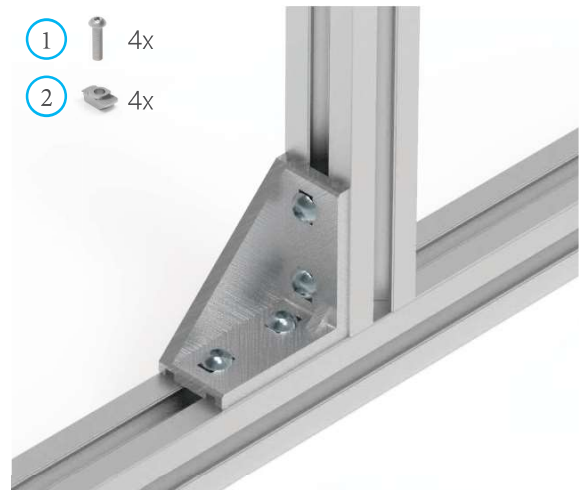
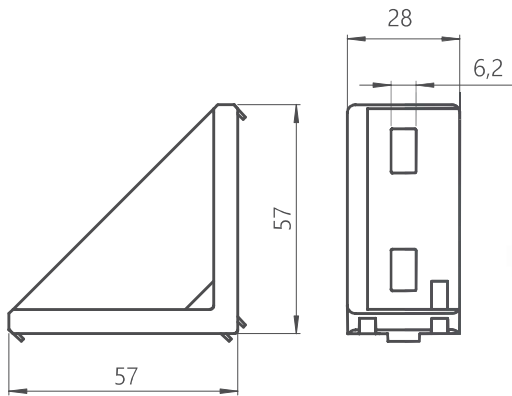
Code	
PA6 #	
63g	11108



Al. kotnik 30 x 60
Al. bracket 30 x 60



Angolare al. 30 x 60
Al.-Winkel 30 x 60



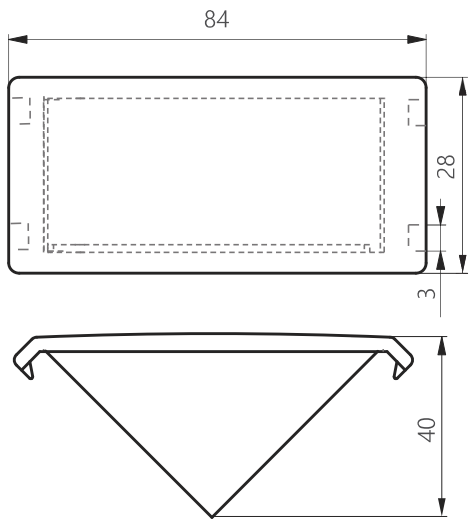
- 1 4x
- 2 4x

Code	
Zn	
56g	11109

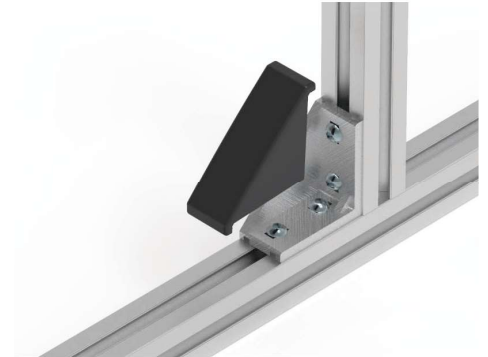
Assembly components - sold separately		Code
1	Round-head screw M6x12	40 11017
2	Hammer nut M6 U8	45 11057



Pokrov za kotnik 30 x 60
Cover cap for bracket 30 x 60



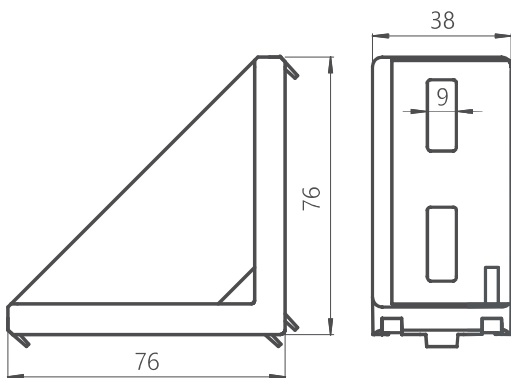
Tappo per angolare 30 x 60
Winkelabdeckkappe für 30 x 60



Code	
PA6 #	
14g	11163



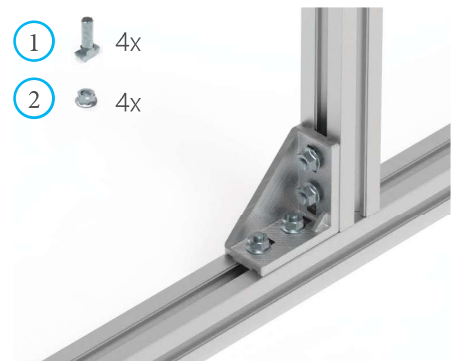
Al. kotnik 40 x 80
Al. bracket 40 x 80



Angolare al. 40 x 80
Al.-Winkel 40 x 80



- 1 4x
- 2 4x



Code	
Zn	
116g	11084

Assembly components - sold separately			Code
1	Hammer head screw M8x25		42 11048
2	Flange nut M8 16		43 11052



Pokrov za kotnik 40 x 80



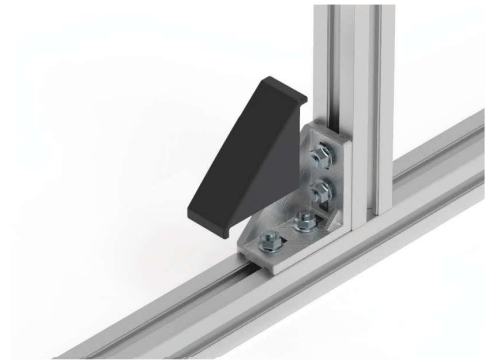
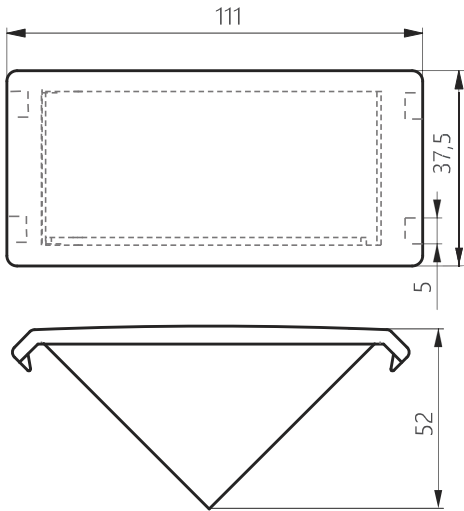
Tappo per angolare 40 x 80



Cover cap for bracket 40 x 80



Winkelabdeckkappe für 40 x 80



Code

PA6 #		
	26g	11085



Al. kotnik 45 x 90



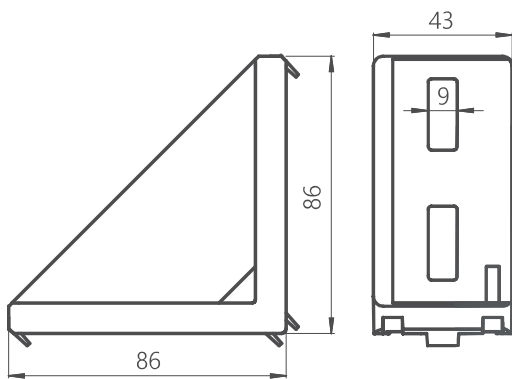
Angolare al. 45 x 90



Al. bracket 45 x 90



Al.-Winkel 45 x 90



- ① 4x
- ② 4x



Code

Zn	10		
		154g	11110

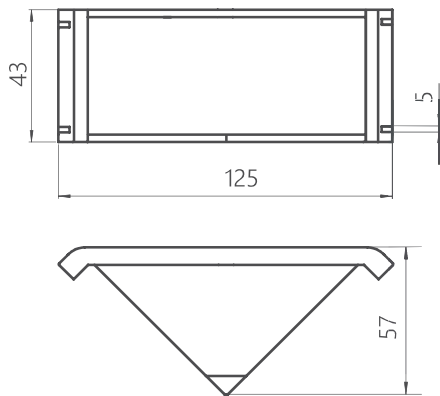
Assembly components - sold separately			Code
①	Hammer head screw M8x25		42 11048
②	Flange nut M8 16		43 11052



Pokrov za kotnik 45 x 90
Cover cap for bracket 45 x 90



Tappo per angolare 45 x 90
Winkelabdeckkappe für 45 x 90



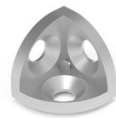
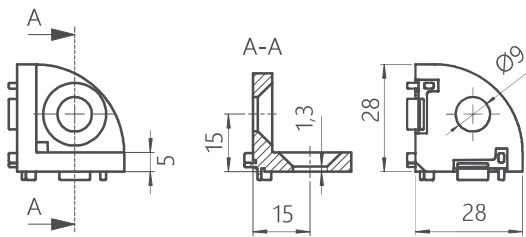
		Code
PA6 #		
	34g	11086



Kotnik vogalni 30 x 30
3-way connection angle 30 x 30



Angolare a 3-vie 30 x 30
Eckwinkel 30 x 30



		Code
Zn	8	
	38g	11111

Assembly components - sold separately		Code
1	Countersunk screw M8x25	41 11029



Pokrov za kotnik vogalni 30 x 30



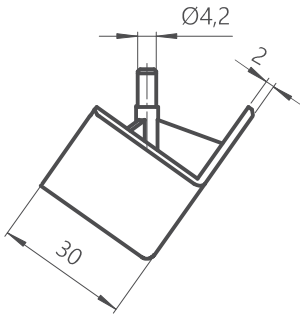
Tappo per angolare a 3-vie 30 x 30



Cover cap for 3-way connection angle 30 x 30



Abdeckkappe für Eckwinkel 30 x 30



Code	
PA6 #	
8g	11112



Pokrov za kotnik vogalni 30 x 30 R



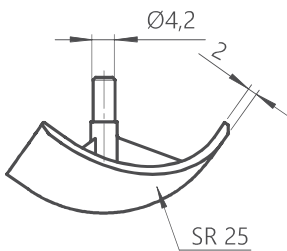
Tappo per angolare a 3-vie 30 x 30 R



Cover cap for 3-way connection angle 30 x 30 R



Abdeckkappe für Eckwinkel 30 x 30 R



Code	
PA6 #	
6g	11113



Kotnik vogalni 40 x 40



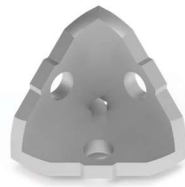
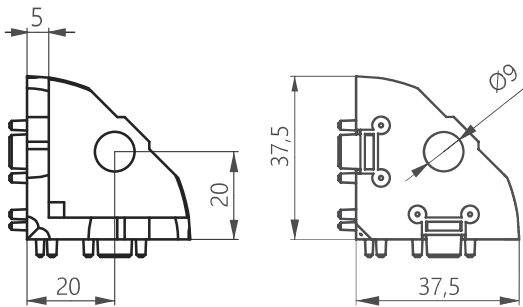
3-way connection angle 40 x 40



Angolare a 3-vie 40 x 40



Eckwinkel 40 x 40



① 3x

Zn	10		Code
		76g	11145

Assembly components - sold separately			Code
①	Round-head screw M8x25	40	11024



Pokrov za kotnik vogalni 40 x 40



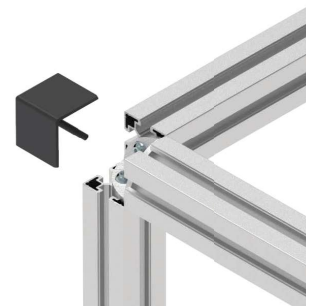
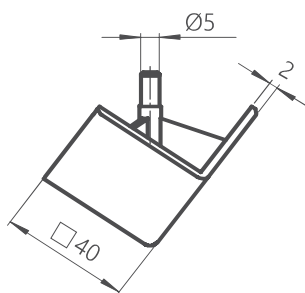
Cover cap for 3-way connection angle 40 x 40



Tappo per angolare a 3-vie 40 x 40



Abdeckkappe für Eckwinkel 40 x 40



PA6 #		Code
	16g	11146



Kotnik vogalni 45 x 45



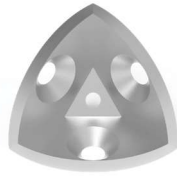
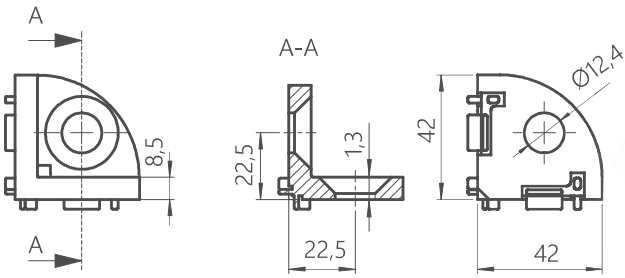
3-way connection angle 45 x 45



Angolare a 3-vie 45 x 45



Eckwinkel 45 x 45



① 3x

			Code
Zn	10		
			46g
			11114

Assembly components - sold separately		Code
①	Countersunk screw M8x25	41 11029



Pokrov za kotnik vogalni 45 x 45 R



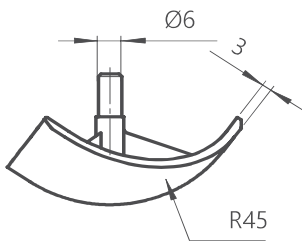
Cover cap for 3-way connection angle 45 x 45 R



Tappo per angolare a 3-vie 45 x 45 R



Abdeckkappe für Eckwinkel 45 x 45 R



			Code
PA6	#		
			18g
			11115



Pokrov za kotnik vogalni 45 x 45



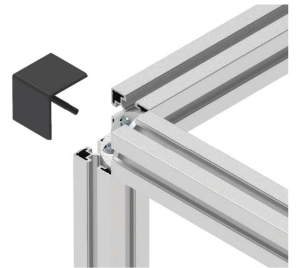
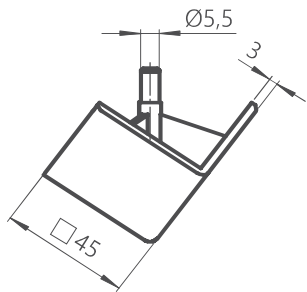
Tappo per angolare a 3-vie 45 x 45



Cover cap for 3-way connection angle 45 x 45



Abdeckkappe für Eckwinkel 45 x 45



Code

PA6 #		
16g		11172



Kotnik kocka 3D



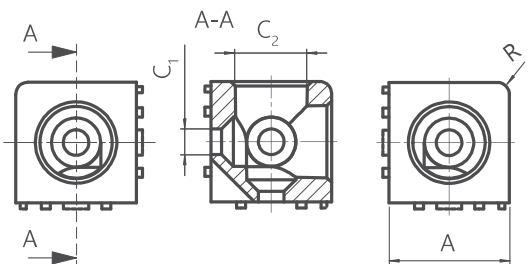
Connettore cubico 3D



Cube connector 3D



Würfelverbinder 3D



① 3x

Code

AI		A	C ₁	C ₂	R		
8	8/10	30	9	18	2	38g	11147
10		40	8,5	24	4	94g	11148
10		45	13	24	3	140g	11149

Assembly components - sold separately

Code

①	Countersunk screw M8x25		41	11029
---	-------------------------	--	----	-------



Kotník 40 x 40 - 45°



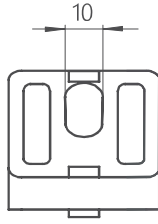
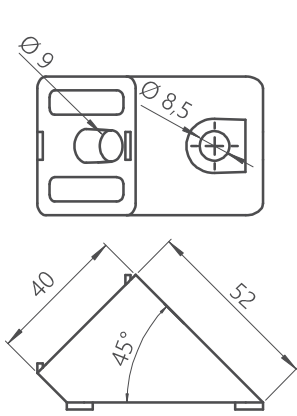
Angolare 40 x 40 - 45°



Angle connector 40 x 40 - 45°



Winkelverbinder 40 x 40 - 45°



- ① 1x
- ② 1x
- ③ 1x



Code

Zn	10		
		208g	11144

Assembly components - sold separately			Code
①	Cylinder head screw M8x16	40	11007
②	Hammer nut M8 U10	45	11061
③	Cylinder head screw M8x20	40	11008



Kotník 30 x 30 - 45°



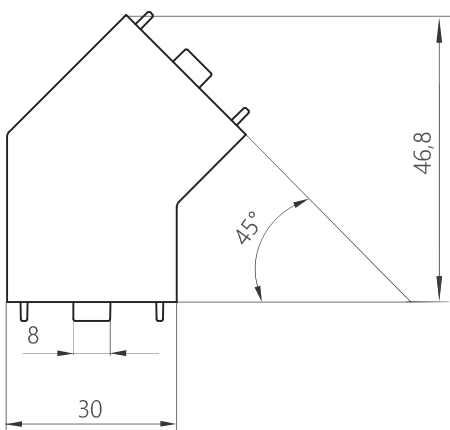
Angolare 30 x 30 - 45°



Angle connector 30 x 30 - 45°



Winkelverbinder 30 x 30 - 45°



- ① 2x



Code

Al	8		
		50g	11167

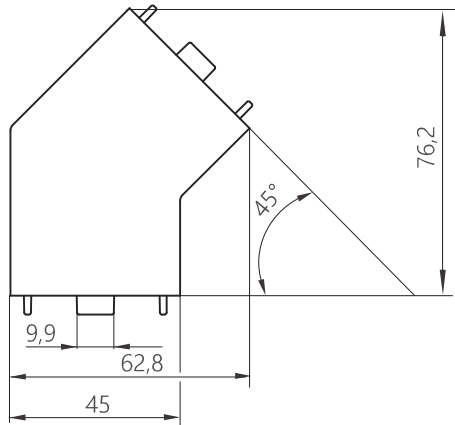
Assembly components - sold separately			Code
①	Cylinder head screw M8x20	40	11008



Kotník 45 x 45 - 45°



Angle connector 45 x 45 - 45°



Angolare 45 x 45 - 45°



Winkelverbinder 45 x 45 - 45°



- 1 2x
- 2 2x



Code

AI	10		
			160g
			11091

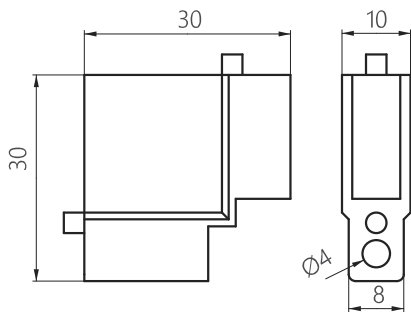
	Assembly components - sold separately		Code
1	Cylinder head screw M8x40	40	11010
2	Washer	44	11054



Kotník profila mreže



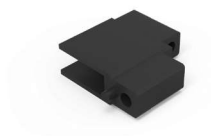
Corner connector for grid profile



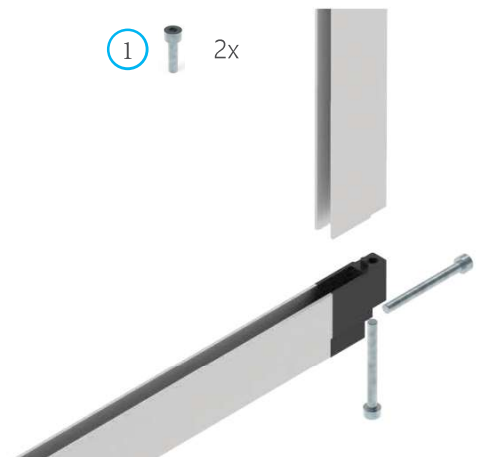
Raccordo d'angolo-profilo per griglia



Eckverbinder für Gitter



- 1 2x



Code

PP	8/10		
			4g
			11116

	Assembly components - sold separately		Code
1	Cylinder head screw M4x40	40	11026



Kotnik notranji 90°



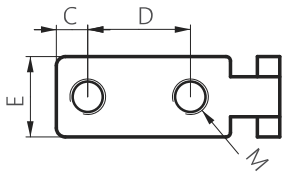
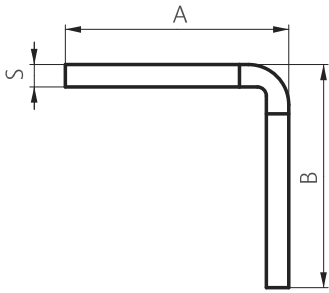
Angolare interno 90°



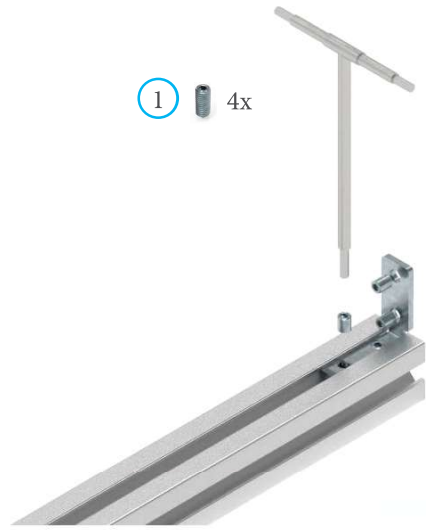
Inner connector 90°



Innenverbinder 90°



① 4x



Code

Zn Fe	8	M	A	B	C	D	E	S		
		6	40	40	7	20	16	3	24g	11117

Assembly components - sold separately

Code

①	Threaded insert M6x8	41	11031
---	----------------------	----	-------



Kotnik notranji 90°



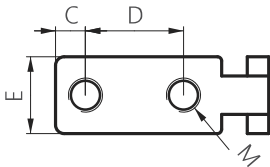
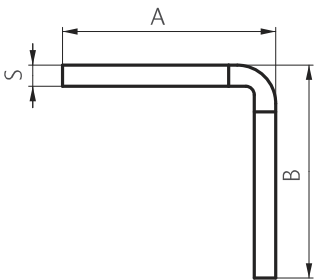
Angolare interno 90°



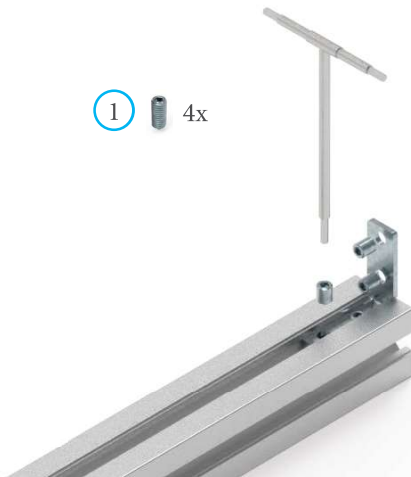
Inner connector 90°



Innenverbinder 90°



① 4x



* Only for profile 40

Code

Zn Fe	10	M	A	B	C	D	E	S		
		8	50	50	7	22,5	18	3	32g	11157*
		8	50	50	7	22,5	18	5	50g	11118

Assembly components - sold separately

Code

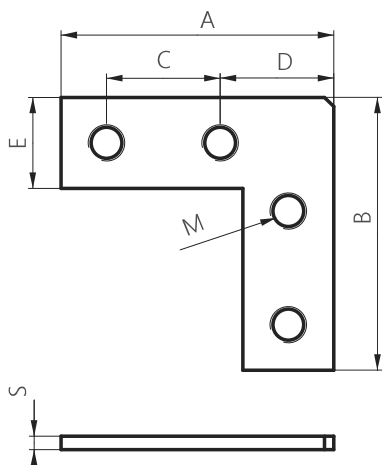
①	Threaded insert M8x10	41	11033
---	-----------------------	----	-------



Kotnik zunanji 90°
Outer connector 90°



Angolare esterno 90°
Aussenverbinder 90°



Code

Zn Fe	8/10	M	A	B	C	D	E	S		Code
	8	6	46	46	20	19	16	3	36g	11119
	10	8	60	60	25	25	20	3	42g	11120

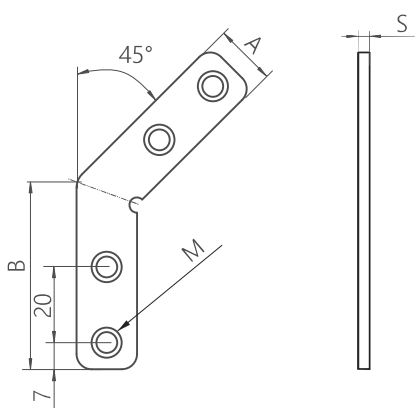
		Assembly components - sold separately	Code
8	①	Threaded insert M6x8	41 11031
10	②	Threaded inserts M8x10	41 11033



Kotnik zunanji 45°
Outer connector 45°



Angolare esterno 45°
Aussenverbinder 45°



① 4x

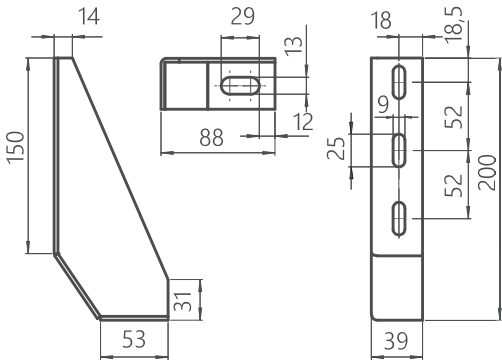


Code

Zn Fe	10	M	A	B	S		Code
	10	8	16	45	3	100g	11093

	Assembly components - sold separately	Code
①	Threaded inserts M8x10	41 11033


 Kotník temeljni
Floor bracket

 Angolare di base
Bodenwinkel


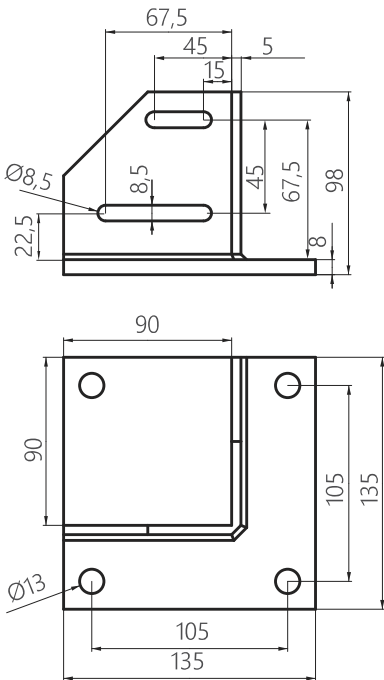
- ① 3x
- ② 3x



Code		
Zn Fe	10	
		434g
		11121

Assembly components - sold separately			Code
①	Hammer head screw M8x20	42	11047
②	Flange nut M8 16	43	11052


 Temeljna plošča univerzalna
Foot console

 Piastra di base universale
Fusskonsole universal


- ① 4x
- ② 4x
- ① 6x
- ② 6x



Code		
Zn Fe	8/10	
		1718g
		11137*

Assembly components - sold separately			Code	
8	①	Round-head screw M8x14	40	11022
	②	Square nut M8	46	11064
Assembly components - sold separately			Code	
10	①	Hammer head screw M8x20	42	11047
	②	Flange nut M8 16	43	11052

*

 Za profil | For profile | Per profilo | Für Profile
 30 x 30, 30 x 60, 30 x 90 | 40 x 40, 40 x 80 | 45 x 45, 45 x 90, 45 x 60 | 60 x 60 | 80 x 80 | 90 x 90



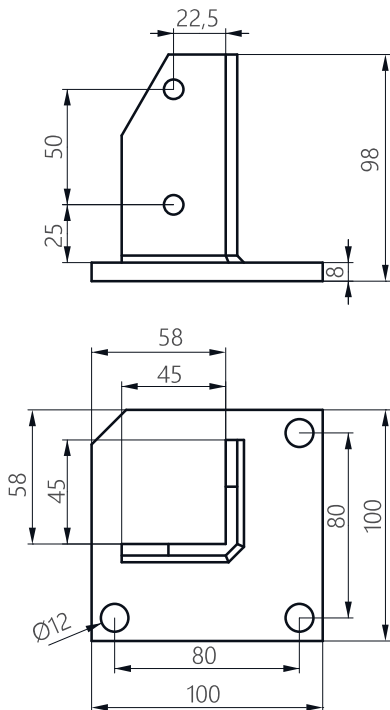
Temeljna plošča za 45 x 45

Foot console 45 x 45



Piastra di base per 45 x 45

Fusskonsole für 45 x 45



- ① 4x
- ② 4x



Code

Zn Fe	10		
904g			11160

Code	Assembly components - sold separately	Code
10	① Hammer head screw M8x20 42	11047
	② Flange nut M8 16 43	11052



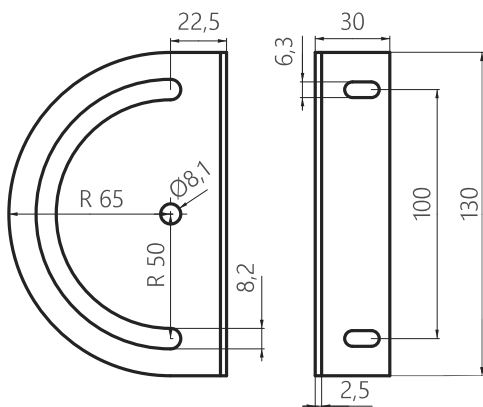
Nosilec nastavljivi 180°

Adjustable pivot bracket 180°



Supporto regolabile 180°

Einstellbare Halterung 180°



- ① 2x
- ② 3x
- ③ 1x
- ④ 1x
- ⑤ 1x



Code

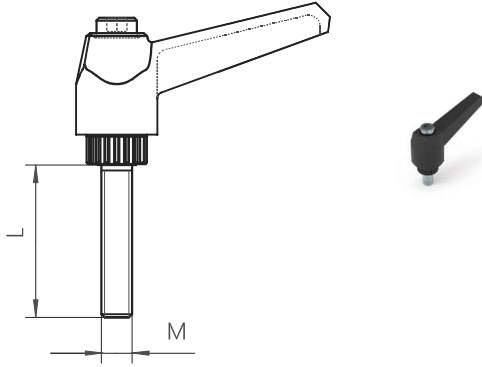
Zn Fe	8/10		
216g			11122

Code	Assembly components - sold separately	Code
8	① Round-head screw M6x10 40	11016
	② Square nut M6 U8 46	11063
	③ Cylinder head screw M8x10 40	11021
	④ Square nut M8 U8 46	11064
	⑤ Clamping lever 74	11158

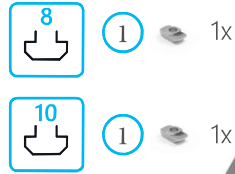
Code	Assembly components - sold separately	Code
10	① Round-head screw M6x12 40	11017
	② Square nut M6 U10 45	11060
	③ Cylinder head screw M8x14 40	11022
	④ Square nut M8 U10 46	11066
	⑤ Clamping lever 74	11159



Zatezna ročica
Clamping lever



Maniglia di bloccaggio
Klemmhebel



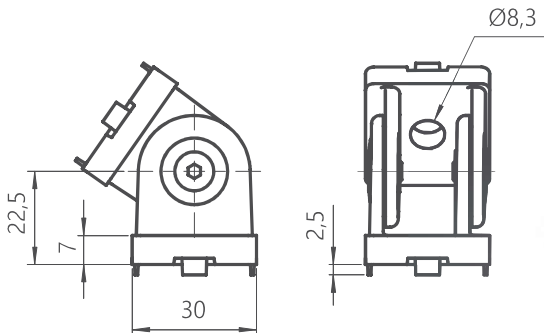
Code

Zn Fe	8/10	M	L		
		6	10	33g	11158
		8	16	35g	11159

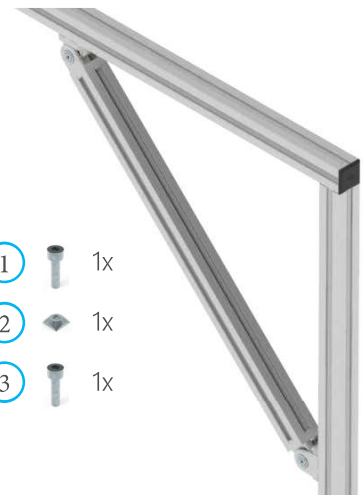
		Assembly components - sold separately		Code
8	1	Hammer nut M6 U8	45	11057
10	2	Hammer nut M8 U10	45	11061



Zglob 30 x 30
Pivot joint 30 x 30



Snodo regolabile 30 x 30
Gelenk 30 x 30



Code

Zn Fe	8		
		138g	11123

Površina	Sivo lakirano
Surface	Silver laquered
Superficie	Grigio laccato
Oberfläche	Silber lackiert

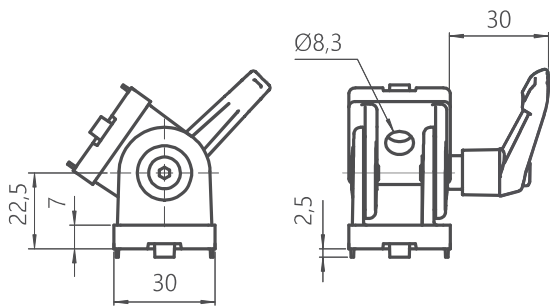
	Assembly components - sold separately		Code
1	Cylinder head screw M8x16	40	11007
2	Square nut M8 U8	46	11064
3	Cylinder head screw M8x20	40	11008



Zglob 30 x 30 z ročico



Pivot joint with locking lever 30 x 30



Snodo 30 x 30 regolabile con maniglia



Gelenk 30 x 30 mit Klemmhebel



1 2x

Code

Zn	8		
		150g	11124

Površina	Sivo lakirano
Surface	Silver laquered
Superficie	Grigio laccato
Oberfläche	Silber lackiert

Assembly components - sold separately

1	Cylinder head screw M8x20		40	Code	11008
---	---------------------------	--	----	------	-------



Zglob 40 x 40



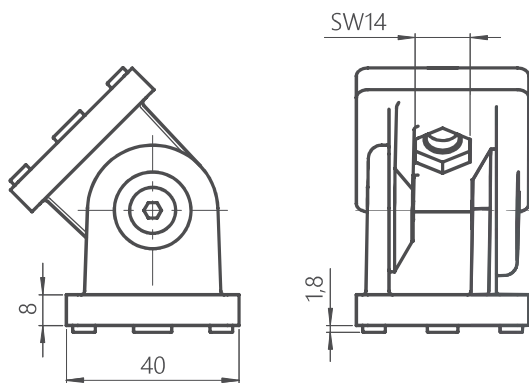
Pivot joint 40 x 40



Snodo regolabile 40 x 40



Gelenk 40 x 40



1 2x



Code

Zn	10		
		150g	11150

Površina	Sivo lakirano
Surface	Silver laquered
Superficie	Grigio laccato
Oberfläche	Silber lackiert

Assembly components - sold separately

1	Cylinder head screw M8x20		40	Code	11008
---	---------------------------	--	----	------	-------



Zglob 40 x 40 z ročico



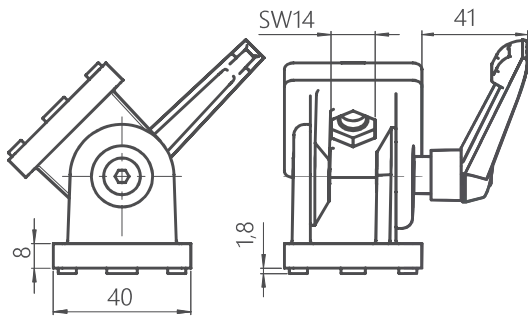
Snodo 40 x 40 regolabile con maniglia



Pivot joint 40 x 40 with locking lever



Gelenk 40 x 40 mit Klemmhebel



① 2x



Code

Zn	10		
		310g	11151

Površina	Sivo lakirano
Surface	Silver laquered
Superficie	Grigio laccato
Oberfläche	Silber lackiert

Assembly components - sold separately

①	Cylinder head screw M8x20	40	Code 11008
---	---------------------------	----	---------------



Zglob 40 x 80



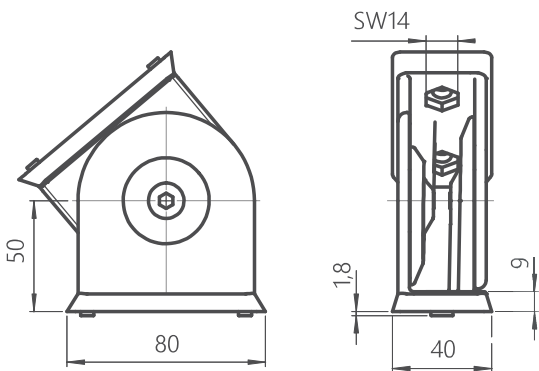
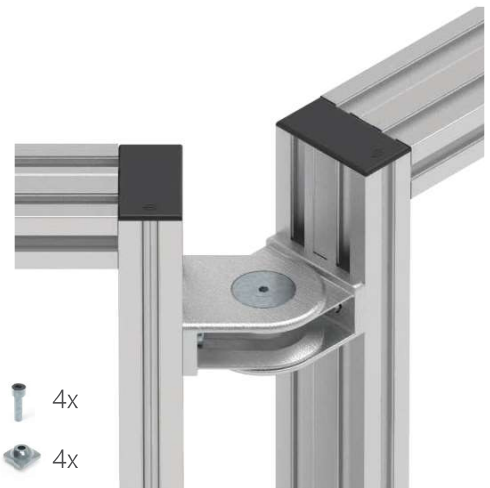
Snodo regolabile 40 x 80



Pivot joint 40 x 80



Gelenk 40 x 80


 ① 4x
 ② 4x


Code

Zn	10		
		1000g	11089

Površina	Sivo lakirano
Surface	Silver laquered
Superficie	Grigio laccato
Oberfläche	Silber lackiert

Assembly components - sold separately

①	Cylinder head screw M8x16	40	Code 11007
②	Square nut M8 U10	46	Code 11066



Zglob 40 x 80 z ročico



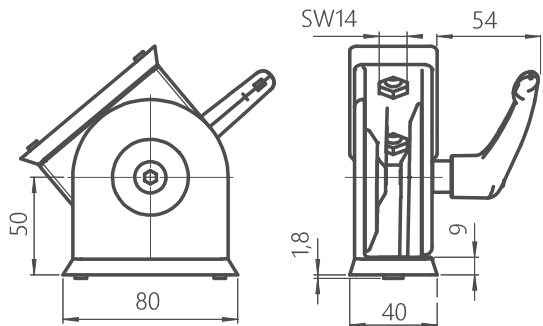
Pivot joint 40 x 80 with locking lever



Snodo 40 x 80 regolabile con maniglia



Gelenk 40 x 80 mit Klemmhebel



① 4x



Code

Zn	10		
		1158g	11090

Površina	Sivo lakirano
Surface	Silver laquered
Superficie	Grigio laccato
Oberfläche	Silber lackiert

Assembly components - sold separately

①	Cylinder head screw M8x20		40	Code	11008
---	---------------------------	--	----	------	-------



Zglob 45 x 45



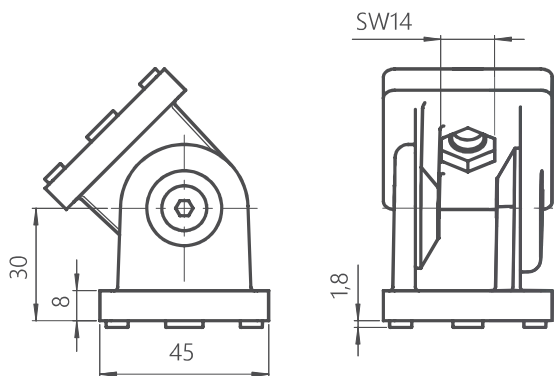
Pivot joint 45 x 45



Snodo regolabile 45 x 45



Gelenk 45 x 45



① 2x



Code

Zn	10		
		322g	11125

Površina	Sivo lakirano
Surface	Silver laquered
Superficie	Grigio laccato
Oberfläche	Silber lackiert

Assembly components - sold separately

①	Cylinder head screw M8x20		40	Code	11008
---	---------------------------	--	----	------	-------



Zglob 45 x 45 z ročico



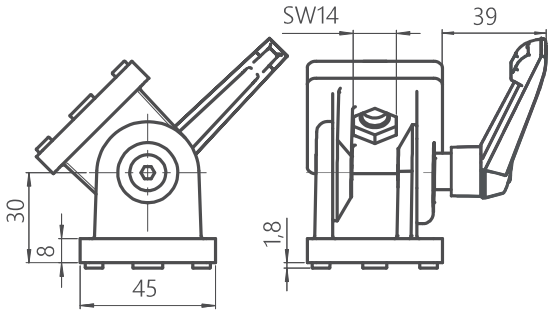
Pivot joint 45 x 45 with locking lever



Snodo 45 x 45 regolabile con maniglia



Gelenk 45 x 45 mit Klemmhebel



① 2x



Code

Zn	10		
		354g	11126

Površina	Sivo lakirano
Surface	Silver laquered
Superficie	Grigio laccato
Oberfläche	Silber lackiert

Assembly components - sold separately

			Code
①	Cylinder head screw M8x20	40	11008



Zglob 45 x 90



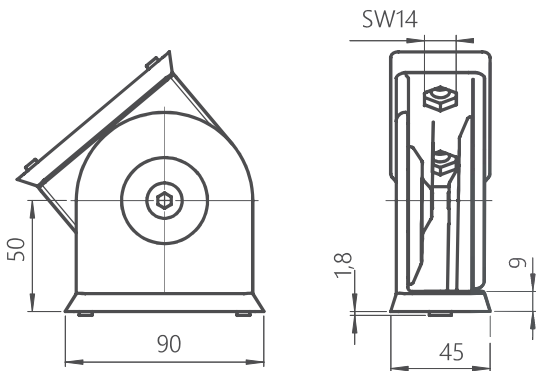
Pivot joint 45 x 90



Snodo regolabile 45 x 90

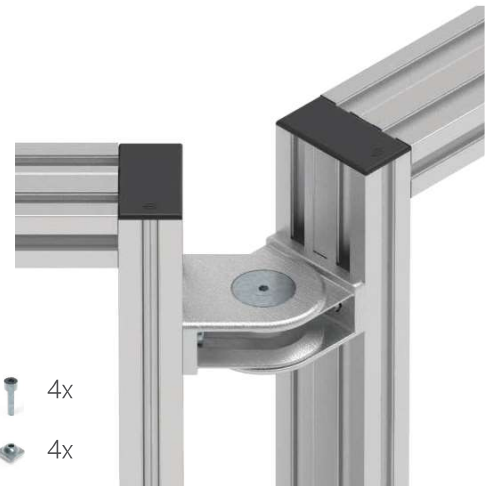


Gelenk 45 x 90



① 4x

② 4x



Code

Zn	10		
		1032g	11127

Površina	Sivo lakirano
Surface	Silver laquered
Superficie	Grigio laccato
Oberfläche	Silber lackiert

Assembly components - sold separately

			Code
①	Cylinder head screw M8x16	40	11007
②	Square nut M8 U10	46	11066



Zglob 45 x 90 z ročico



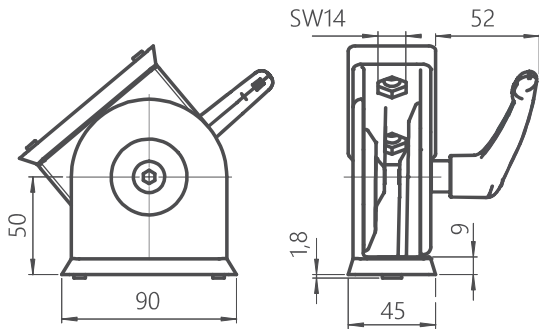
Pivot joint 45 x 90 with locking lever



Snodo reg. con maniglia 45 x 90



Gelenk 45 x 90 mit Klemmhebel



1 4x



Površina	Sivo lakirano
Surface	Silver laquered
Superficie	Grigio laccato
Oberfläche	Silber lackiert

Code

Zn	10		
		1166g	11128

Assembly components - sold separately

1	Cylinder head screw M8x20		40	Code	11008
---	---------------------------	--	----	------	-------



Spojní element Ø8



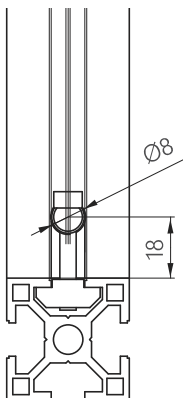
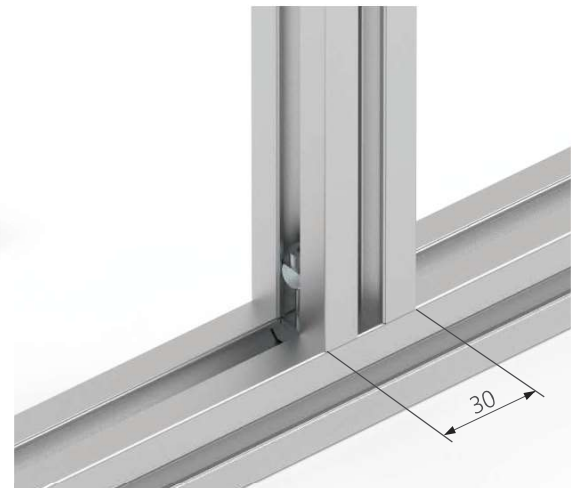
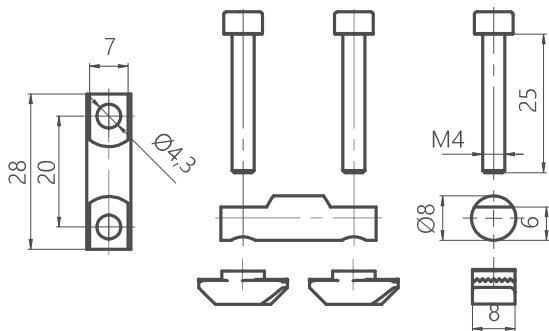
Bolt connector Ø8



Connettore con dado Ø8



Bolzenverbinder Ø8



Code

Zn	8		
		23g	11129



Spojní element Ø17



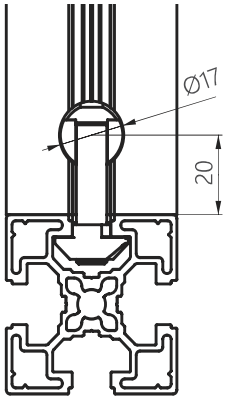
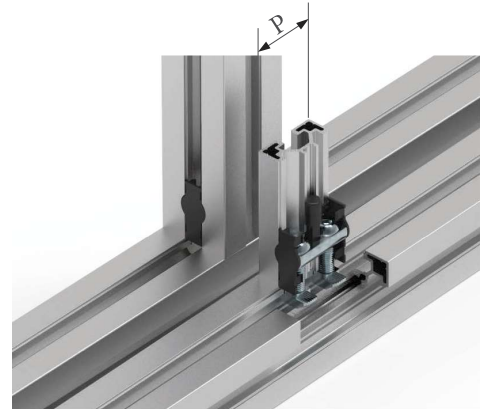
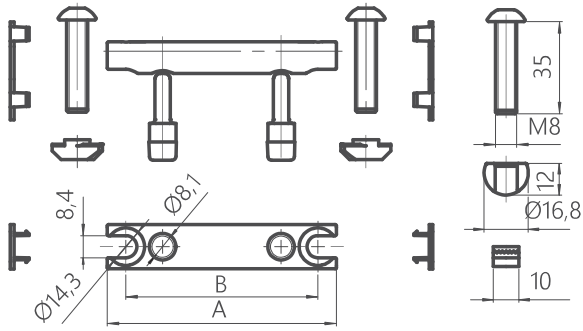
Connettore con dado Ø17



Bolt connector Ø17



Bolzenverbinder Ø17



Code

Zn Fe	10	P	A	B		Code
		40	37	23	68g	11152
		45	42	27,5	76g	11133
		60	57	43	95g	11138
		80	77	63	118g	11092
		90	87	73	130g	11134



Spojní element profila U8



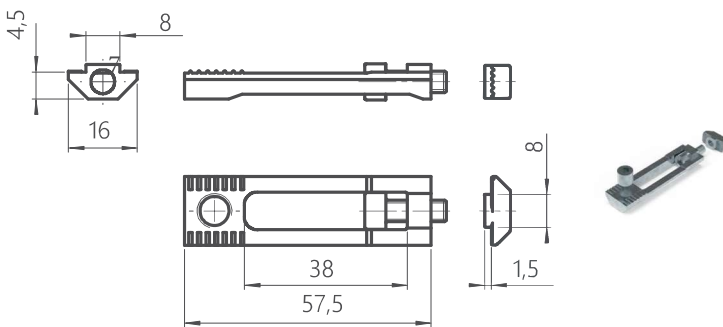
Raccordo per profilo C8



Milling connector profile U8



Fräsverbinder Profil U8



Code

Zn Fe	8		Code
		28g	11135



Avtomatski spojni element U8



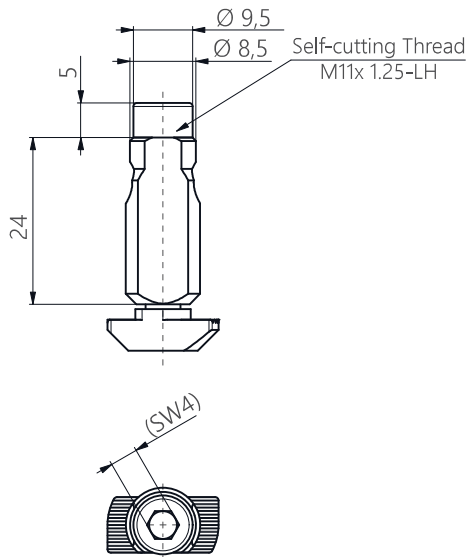
Automatic connector U8



Raccordo automatico C8



Automatikverbinder U8



Zn Fe	8		Code
		28g	11173



Spojni element profila U10



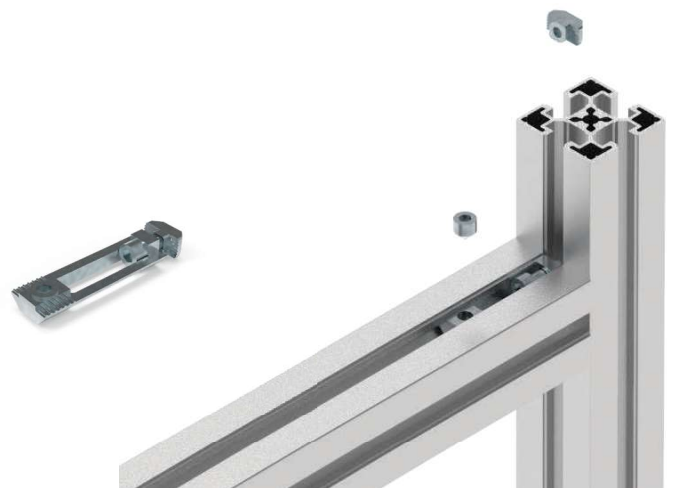
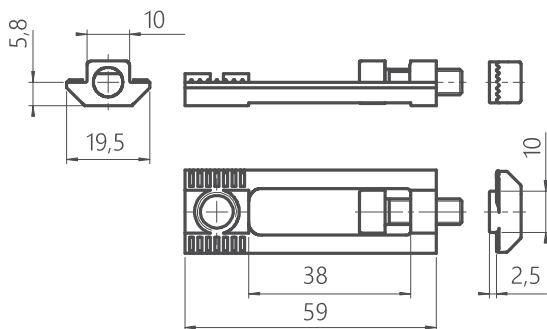
Milling connector profile U10



Raccordo per profilo C10



Fräsverbinder Profil U10



Zn Fe	10		Code
		38g	11136



Centralni spojni element 0°/90°



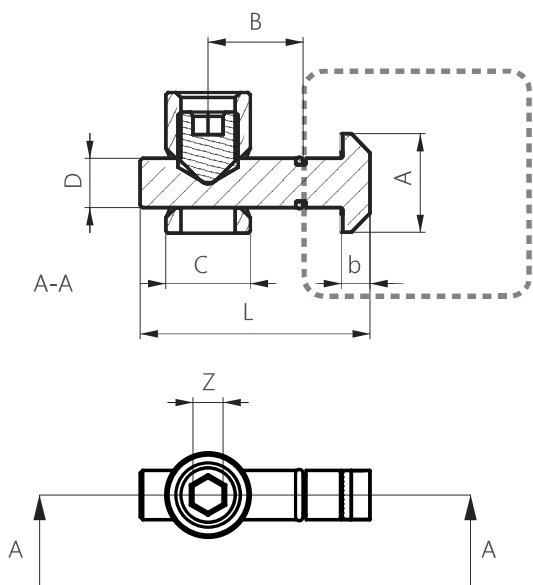
Raccordo centrale 0°/90°



Central connector 0°/90°



Zentralverbinder 0°/90°



0°



90°



Code

Zn Fe	10/8	Version	A	B	C	b	D	L	Z	Weight	Code	
		8	0°	15,5	18	11	5	7	33	4	20g	11153
		8	90°	15,5	18	11	5	7	33	4	20g	11154
		10	0°	19,5	24	17	5,5	9,7	45,5	6	56g	11155*
		10	90°	19,5	24	17	5,5	9,7	45,5	6	56g	11156*

Ni primeren za profil | Not suitable for profile | Non è adatto per profilo | Nicht geeignet für Profil
40x40

*



Avtomatski spojni element U10



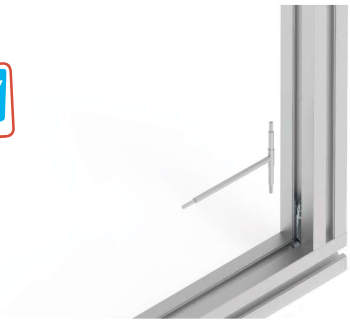
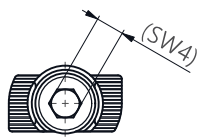
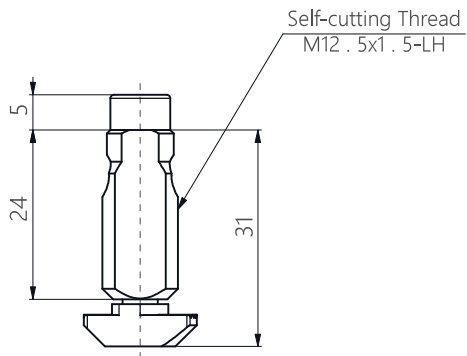
Raccordo automatico C10



Automatic connector U10



Automatikverbinder U10



Zn Fe	10		Code
		38g	11174



Spojni element 30° - 180° U10



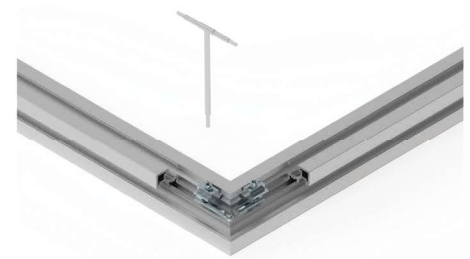
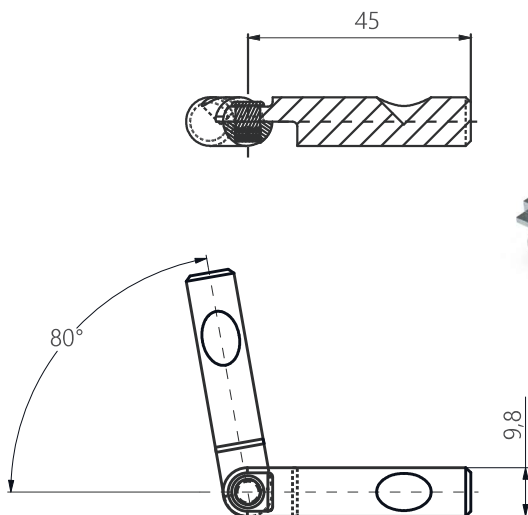
Raccordo 30° - 180° C10



Mitre connector 30° - 180° U10



Gehrungsverbinder 30° - 180° U10



Zn Fe	10		Code
		96g	11175